



Modelling Time to Recovery from Multidrug Resistant Tuberculosis in Southern Ethiopia

Shambel Selman Abdo ^a, Denebo Sebaro Wanore ^{b*},
Deribachew Asfaw Teni ^{c*} and Lombamo Abebe Ejamo ^a

^a Department of Statistics, College of Natural and Computational Sciences, Wachemo University, P.O. Box-667, Hossana, Ethiopia.

^b Department of Biology, College of Natural and Computational Sciences, Wachemo University, P.O. Box-667, Hossana, Ethiopia.

^c Department of Statistics, College of Natural and Computational Sciences, Addis Ababa University, P.O. Box-1176, Addis Ababa, Ethiopia.

Authors' contributions

This work was carried out in collaboration among all authors. Author SSA designing study, writing the first draft of the manuscript, analyzing data by using statistical software's and approving the final manuscript. Author DSW and DAT managing the analysis, searching all possible literatures, reading and approving the final manuscript. Author LAE search all possible literatures, collect, feed and analyze data using SPSS software. All authors read and approved the final manuscript.

Article Information

DOI: 10.9734/JPRI/2024/v36i67525

Open Peer Review History:

This journal follows the Advanced Open Peer Review policy. Identity of the Reviewers, Editor(s) and additional Reviewers, peer review comments, different versions of the manuscript, comments of the editors, etc are available here: <https://www.sdiarticle5.com/review-history/116263>

Original Research Article

Received: 25/02/2024

Accepted: 29/04/2024

Published: 08/05/2024

ABSTRACT

Introduction: Multidrug resistant tuberculosis (MDR-TB) is a global health threat, resistant to key anti-TB drugs. It is ranked among the top 10 causes of death worldwide. Therefore, the current study investigated time to recovery from MDR-TB in southern Ethiopia.

Data, Materials and Methods: Restrospective data from selected hospitals in SNNPR (January 2016 to December 2021) were analyzed. A cluster sample of 301 MDR-TB patients (131 NEMMCH, 121 BH, 49 AGH) was considered.

*Corresponding author: E-mail: dasfaw469@gmail.com, denebosebaro@gmail.com, denesmicro2021@yahoo.com;

Results: Among the 301 cases, 116 (38.5%) were censored. While 185 (61.5%) were recovered. Parametric shared frailty models were employed to account unobserved heterogeneity among the Hospitals and patients and AFT models were employed. the median recovery time of MDR-TB is 22 months. The clustering effect of frailty model was hospitals. Weibull-gamma shared frailty model was appropriate for this data.

Conclusion: The final model showed that males have higher recovery rates than females. Extra pulmonary MDR-TB and Urban residency correleated with longer recovery times. The recovery rate increases with increasing baseline weight, education level, and occupation. But, the recovery rate decreases with smoking, co-morbidities, previous drug history, history of TB, and alcohol use

Recommendation: All concerned bodies should be cognizant on the risk factors of MDR-TB in SNNP region By providing on early case detection and appropriate treatment of drug-susceptible MDR-TB, since it is essential to shorten the recovery time of MDR-TB patients in line with WHO guidelines

Keywords: *Multidrug resistance tuberculosis; time to recovery; parametric shared frailty; Treatment centers; accelerated failure time.*

ABBREVIATIONS

AIDS	: Acquired Immune Deficiency Syndrome
AFT	: Accelerated Failure Time
AIC	: Akakei Information Criteria
ART	: Antiretroviral Therapy
CI	: Confidence Interval
CSA	: Central statistical Agency
HIV	: Human Immunodeficiency Virus
MDR-TB	: Multidrug Resistance Tuberculosis
PH	: Proportional Hazard
TB	: Tuberculosis
WHO	: World Health Organization
XDR	: Extensively Drug Resistant
FQ	: Fluoroquinolone; RR, Rifampicin
NEMMCSH	: Nigist Ellen Mohammed Memorial Comprehensive Specialized Hospital
AGH	: Arbaminch General Hospital
BH	: Butajira Hospital
SNNPR	: South Nation Nationalities People Region

1. INTRODUCTION

“Tuberculosis (TB) is an infectious disease caused by the bacterium mycobacterium tuberculosis. Typically, it affects the lungs and other organs as well as it is transmitted from person to person via droplets, and over 90% of people infected with the tubercle bacillus will not develop TB disease. And it remains a major public-health problem in the world, despite several efforts to improve case identification and treatment compliance. It is also the single highest curable infectious disease today in the world” [1].

“Tuberculosis can be effectively treated with first line drugs (isoniazid, rifampicin, ethambutol and pyrazinamide) for six months. But when this first line drugs are not properly used (erratically used,

poor quality of drugs, poor clinical practice and low completion rate) this leads to Multidrug-resistant Tuberculosis” [1,2].

“Globally TB incidence is falling at about 2% per year by 2020; these figure need to improve to 4–5% per year, to reach the first 2020 milestones to end TB Strategy. In china, 98% of bacteriologically confirmed patients were diagnosed with MDR-TB. Additionally, the continent of Africa has reported a notably high incidence rate of MDR-TB. Africa accounts for 46% of all TB cases in the world and the highest reported incidence rate of 475 cases per 100,000 people. Research suggests that MDR-TB is widespread in numerous regions across Africa. For instance, recent investigations have shown that the prevalence rates of MDR-TB in Nigeria,

Zambia, Rwanda¹, and South Africa⁴ are 54%, 9.5%, 9.4%, and 73%, respectively” [5]. “Multidrug-resistant tuberculosis (MDR-TB) continues to be a public health problem. Globally in 2019, a total of 465,000 people developed rifampicin-resistant TB (RR-TB), of which 78% had MDR-TB” [33].

“MDR TB is treated with second line drugs which need longer treatment (18-24 months), toxic and complication prone, high cost. Currently, the majority of MDR-TB cases are due to one strain of TB bacteria called the Beijing lineage” [1]. “It is well known cause of ill-health among millions of people each year. Latest estimate, 10.4 million people fell ill with TB in 2016 and 1.6 million died from the disease” [3]. “By rising trend of TB, affecting mainly developing countries, there is a need to re-examine the characteristics of the patients and understanding the contributing factors, in order to adjust and adapt TB control policies” [33]. In an effort to intensify the battle against tuberculosis, the government has devoted significant resources to ensure that essential drugs are readily available and that healthcare staff are properly trained in all government and selected mission hospitals. Nonetheless, the current endeavor to identify, treat and care all individuals affected by the disease falls short of sufficiency.

“Ethiopia is one of the 20 high burdens MDR-TB country and MDR-TB has been a major health problem of the society in the Southern region of Ethiopia, a strategy to provide culture and drug susceptibility testing services has been designed” [4]. “Even though various studies done on the prevention and control of the cross-transmission of healthcare-acquired infections between hospitalized patients have been carried out, the prevalence is still increasing” [5,6]. “Moreover, the emerging and rapid transmission of XDR-TB is also another challenge for TB control program, XDR-TB is defined as MDR-TB with additional resistance to any fluoroquinolone (FQ) and at least one of the three second-line injectable drugs: Consequently, controlling and preventing the emergence and overflow of MDR-TB organisms is of vital importance. The Ethiopia National TB program has backed a continuous public awareness initiative via the media. This campaign aims to educate the public about TB symptoms, transmission methods, the significance of seeking medical care, the risks associated with MDR-TB, and the fact that TB is curable” [2].

Investigating the survival duration of patients with MDR-TB serves as a means to address health challenges within the community. This involves identifying the significant factors associated with the time until recovery from MDR-TB patients. The findings of this study could offer valuable evidence to governmental and non governmental organizations, as well as other concerned bodies. This evidence could inform the development of policies, strategies, plans and further investigation.

The findings of this study could offer valuable evidence to governmental and non-governmental organizations, as well as other concerned entities. This evidence could inform the development of policies, strategies, plans and further investigations can be directed towards enhancing recovery rates and improving the control and management of MDR-TB patient mortality. Moreover, this study can serve as a foundation future research endeavors focused on MDR-TB patients.

Thus, the aim of this study is to investigate the recovery time of MDR-TB patients in three selected Hospitals of southern Ethiopia (NEMMCH, Arbamich General Hospital, Butajira Hospital), using accelerated failure time and parametric shared frailty models.

2. MATERIALS AND METHODS

2.1 Study Area, Population and Design

2.1.1 Study area

This research was carried out on MDR-TB treatment centers of SNNPR, Ethiopia. Southern Nations Nationalities and Peoples Region is the country's third-largest administrative region and the most diversified in terms of language, culture, and ethnic origin, covering more than 10% of the country's land area. More than 56 ethnic groups live in the region. The capital city of SNNPR is Hawassa. It is 273 kilometers south of Addis Ababa. The SNNPR is bordered from the south by Kenya, from the west by South Sudan, from the northwest by Gambela, and from the north and east by Oromia. The data for this research took place between January 2016 to December 2021. The region is divided into 17 administrative zones and additionally, there are 6 special woreda's. In the region, there are six MDR-TB treatment centers. In the SNNPR, there are over 45 indigenous ethnic groups, each with their own

cultural heritage and identity. In 2018, the population was estimated to be 20,768,000 [32].

2.1.2 Study population

The study population was all MDR-TB patients who had been registered in the Hospitals. The totals of 301 patients with MDR-TB from the Hospital were included in the study. The total population was proportionally allocated to the three Hospitals: Nigist Ellen Mohammed memorial Comprehensive Hospital (211), Butjira Hospital (199) and Arbamich General Hospital (89).

2.1.3 Study design

A retrospective study design was employed and the data were obtained from MDR-TB patients admitted to the hospitals and also it was carried out in three selected hospitals of SNNP region which have MDR-TB treatment center. Which is a 72-months follow-up period. The time was measured by months in this study.

2.2 Data source and data collection

The required data were extracted from follow-up charts and cards of MDR-TB patients admitted to the selected hospitals from January 2016 to December 2021. The data collectors of our study were trained healthcare professionals (nurses) under the supervision of investigators and the data quality had been checked for their completeness, consistency, and accuracy by investigators every day.

2.3 Sampling techniques and Sample size Determination

Cluster sampling technique was used. Currently, a total of six MDR-TB treatments centers are available, of which Nigist Ellen Mohammed Memorial Comprehensive specialized Hospital, Butajira Hospital and Arbamich General Hospital were selected randomly. We included all patients under follow up in these selected treatment centers consecutively.

2.3.1 Sample size determination

The sample size was determined using at 95% CI with a prevalence of MDR-TB rate of 15% [7] and a margin error of 0.036. "Then a total sample of 499 MDR-TB patients was considered using cluster random sampling methods. Further

discussions on sampling are available at Cochran" [8]. Thus, from a total sample of 301 MDR-TB patients that fulfill the inclusion-exclusion criteria was considered by applying cluster random sampling methods. Subsequently, all individuals within the designated clusters are included within the sample. Following this protocol, samples were collected from specified hospitals in the southern region.

Inclusion and exclusion criteria: Patients with insufficient recorded information in either the registration book or their card were excluded from the study. Additionally, those who had not initiated second-line MDR-TB treatments and XDR-TB patients were also excluded.

2.4 Study Variables

Outcome variables: Time to Recovery from MDR-TB, defined as duration from the starting of MDR-TB treatment until the patient achieves recovery. Time was measured in terms of months. The event of interest was recovery from MDR-TB (1= recovered and 0 =Not recovered or censored). Data was entered by using SPSS-23 and it was cleaned and analyzed by using stata-15 software.

Predictor variables: The study considered predictor variables consisting of MDR-TB patients' background traits and their previous epidemiological, clinical, and laboratory findings, as outlined in Table 1.

2.5 Statistical Models

2.5.1 Survival Analysis

Survival analysis is a statistical methodology used to analyze time-to-event data, where the focus is on understanding the time until a specific event of interest happens. When we refer to time, we are considering years, months, weeks, or a day starting from the commencement of follow up for an individual until a specific event takes place. Survival analysis is a significant statistical method utilized to depict and analyze time to event data. In any applied set, a survival data can summarize through life tables [9], Kaplan-Meier Survival functions [10] and median survival time [11]. "Besides estimating the survival functions, comparing two or more estimated survival curves is the most frequently used statistical tool of recent clinical research" [12].

Table 1. Predictor variables

Predictor variables	Categories
Sex	1 = Male 0 = Female
Age (in year)	0 = 0-17 years 1= 18- 64 years 2= above 65 years
Residence	1 = Urban 0 = Rural
Marital status	0 = Married 1 = Single 2 = Divorced 3 = Widowed
HIV status	0 = HIV Negative 1 = HIV Positive
Smoking history	1 = Smokers, 0 = Non-smokers
Adherence based on Pill count	0 = Poor 1 = Fair 2 = Good
Co-morbidities	1 = Yes 0 = No
Previous drug use history	1 = yes 0 =No
MDR-TB type	0 = pulmonary 1 = Extra pulmonary
Baseline weight	Continuous (kg)
Occupation	0 = Employee, 1 = Farmer, 2 = Merchant
Family size	0= Less than 4 1= between 4 to 6 2= greater than 6
History of TB in Family	1 = Yes 0 =No
Status	1= Recovered 0 = Censored
Education status	0= Not educated 1= Primary 2=Secondary 4= Higher level educated
Alcohol use	1=Yes, 0= No

The simplest way of comparing the survival times obtained from two or more groups are the Kaplan-Meier curves and log-rank test [13]. However, to explore the relationship between the survival experience of individual and explanatory variables, an approach based on statistical modeling has been used [14]. Also used with a modeling approach to the analysis of survival data are the Cox Proportional Hazard [15], Accelerated Failure Time [15] and parametric shared frailty models [16].

2.5.2 Accelerated failure time model

The Accelerated Failure Time (AFT) model serves as a parametric alternative to the Proportional Hazards (PH) model. While the PH model assumes that covariates multiply the hazard by a constant, the AFT model posits that covariates either speed up or slow down the progression of an event by a constant factor. Parametric models, particularly AFT models, are well-suited for analyzing survival data, as there are limited probability distributions for survival time that can be employed in these models. In

AFT models, the focus is on directly measuring the impact of explanatory variables on the survival time, rather than the hazard. For AFT models it is common to use the log-linear representation:

$$Y_i = \log T_i = \mu + \beta_1 X_{1i} + \dots + \beta_{p_i} X_{p_i} + \sigma \varepsilon_i \dots \quad Eq(1),$$

Where;

- ✓ $\log T_i$ represents the log-transformed survival time,
- ✓ μ is the intercept
- ✓ σ is the scale parameter,
- ✓ x_1, \dots, x_p are the explanatory variables with the coefficients β reflecting the effect that each explanatory variable have on the survival time and estimated by maximum likelihood method using a Newton-Raphson procedure and
- ✓ ε_i is the error term which is assumed to follow a specific distribution such as Weibull [17], log-normal [18], log-logistic [15] and gamma [19] among many.

2.5.3 Parametric shared frailty models

To address unobserved variations, the concept of frailty term was initially introduced by Hougaard in 1991 as an extension of proportional hazards. In a shared frailty model, observations within a cluster exhibit the same level of frailty, and the common frailty variance quantifies the interdependence among lifetimes within that cluster [20].

Consider a scenario with i clusters, where each cluster i comprises n_i observations, and the total sample size is given by $\sum_1^r n_i = n$ is the total sample size and $t_{ij} = \min(c_{ij}, t_{ij}^*)$ is the observed failure time of a right censoring scheme for k^{th} ($k = 1, \dots, n_i$) observation in i^{th} cluster and c_{ij} is the censoring time, where t_{ij}^* and c_{ij} are independent random variables [16]. Then the observed censoring indicator δ_{ij} is equal to 1 if $t_{ij}^* < c_{ij}$, and 0 otherwise and conditional on frailty y_i (> 0) and X_{ij} , the hazard function of i^{th} cluster has the form:

$$h(t_{ij}, x_{ip}, y_i) = y_i h_o(t_{ij}) \exp(\beta' x_{ij}) \dots \quad Eq (2),$$

Where;

- ✓ $h_o(\cdot)$ is the baseline hazard function
- ✓ x_{ij} is a vector of observed predictors for the k^{th} observation and
- ✓ β is a vector of regression parameters.

The frailties, represented by y_i , are independent and identically distributed (i. i. d.) variables with a

shared probability density function $g(y_i)$. Numerous investigations have explored the selection of continuous distributions for frailty random variables, including Gamma [19], inverse Gaussian [20], log-normal [18], and positive stable [21]. And a limited number of studies have explored discrete distributions [22].

2.5.4 Models comparison and diagnostics

Model comparison and selection are among the most common problems of statistical practice, with numerous procedures for choosing among a set of models. There are several methods of model selection. One of the most commonly used model selection criteria is Akaike Information Criterion (AIC). we were compare the models study by using AIC, BIC, Likelihood ratio test [24] criteria's was used to compare various candidate models and the model with the smallest AIC and BIC value is considered as a better fit [25]. This is defined as:

$$AIC = -2\log L + 2(p+k) \dots \quad Eq(3),$$

Where, k is the number of covariates and p the number of model specific distributional parameters. This research used the AIC to compare various candidates of non-nested parametric models. The preferred model is the one with the lowest value of the AIC.

After a model fitted, the adequacy of the fitted model needs to be assessed. The methods that involved the model checking for this study used evaluation of the Parametric Baselines, log rank test and the Cox-Snell Residuals [15].

Cox-Snell Residuals: The Cox-Snell residuals method can be applied to any parametric model and the residual plots can be used to check the goodness of fit of the model. For the parametric regression problem, analogs of the semi-parametric residual plots can be made with a redefinition of the various residuals to incorporate the parametric form of the baseline hazard rates [15].

3. RESULTS AND DISCUSSION

3.1 Exploratory Data Analysis

In the event that the study's primary goal of determining how long MDR-TB patients in southern Ethiopia take to recover is accomplished. A total of 301 MDR-TB patients

from NEMMCSH (131), BH (121) and AGH (49) were included in the study during the data collecting period. Of the total sample, 116 (38.5%) were censored, and 185 (61.5%) MDR-TB patients were recovered.

According to the study, the average recovery time or overall median time for MDR-TB patients in each hospital was 22 months, with the minimum and maximum recovery times being 18 and 24 months, respectively.

Table 2. Status of the patients

Status of patients	Frequency (%)
Censored	116(38.5%)21.4
Recovered	185(61.5%)
Total N, %	301(100%)

Table 3. Descriptive results on demographic, clinical, and epidemiological characteristics of patients with MDR-TB from three selected Hospitals in southern Ethiopia

Covariates	Categories	Total (%)	Recovered (%)	Censored	Median
Sex	Female	136(43.51%)	79(58.08%)	45	22
	Male	165(54.8%)	106(64.2%)	59	21
Treatment center	NEMMCSH	131(43.5%)	86(65.6%)	59	22
	Butjira	121(40.51%)	72(59.5%)	49	22
	Arbamich	49(16.3%)	27(55.1%)	22	21
Age	0-17 years	31(10.3%)	17(54.84%)	14	20
	18-64 years	259 (86.4%)	159(61.4%)	100	23
	Above 65 years	11(3.65%)	9(81.81%)	2	24
Residence	Rural	156(51.8%)	94(60.3%)	48	22
	Urban	142(47.2%)	89(62.7%)	67	23
HIV status	Negative	265(88.0%)	162(61.1%)	103	22
	Positive	36(12.01%)	13(36%)	23	24
Smoking status	Smoker	64(21.3)	40(42.5%)	24	22
	Non smoker	237(78.7%)	145(61)	92	21
Adherence	Poor	62(20.6)	35(56.5%)	27	23
	Fair	61(20.3%)	41(67.2%)	20	21
	Good	178(59.1%)	109(61.2%)	69	22
Co-morbidities	Yes	46(15.3%)	24(52.2%)	22	22
	No	255(84.7%)	161(63.1%)	94	22
Drug use history	Yes	231(76.7%)	140(60.6%)	91	22
	No	70(23.3%)	45(64.28%)	25	22
MDR TB type	Pulmonary	270 (89.7)	166(61.5%)	104	21
	Extra pulmonary	31(10.3%)	19(61.3)	12	23
Occupations	Employed	51(16.5%)	29(56.8%)	22	22
	Farmer	153(50.8%)	106(69.3%)	47	22
	Merchant	67(22.3%)	36(53.7%)	31	23
	Other	30(10%)	14(46.6%)	16	21
History of TB	Yes	184(61.1%)	113(61.4%)	71	23
	No	117(38.9%)	72(60.5%)	45	22
Education status	Not educated	41(13.6%)	25(60.9%)	16	23
	Primary	93(30.9%)	55(59.1%)	38	23
	Secondary	100 (33.2)	63(63%)	37	22
	Above all	67(22.3)	42(62.7%)	25	23
Using Alcohol	Yes	181(60.1%)	112(61.9)	69	23
	No	120(39.9%)	73(60.8)	47	22
Clinical completion	Completed	109(36.2%)	42(38.5%)	67	17
	Not complete	191(63.5%)	74(38.7%)	117	20
Summary statistics of baseline continuous variables					
Continuous variables	Mean	Standard deviation	Minimum	Maximum	Median
Weight	46.52	13.20	6.50	85.50	48.50
Time	20.16	3.3	8.50	24	22.01

The Recovery rate of MDR-TB was higher in males (64.2%) than in females (58.08%) (Males are more likely to recover than females). According to a study, 31 patients are extrapulmonary among the 301 recorded MDR-TB patients, 270 of whom had pulmonary TB. Extra pulmonary MDR-TB (10.3%) had a lengthier recovery time than pulmonary MDR-TB (89.7%). 166 (61.5%) of the 270 patients with pulmonary tuberculosis recovered, while 19 of the 31 additional patients experienced extra pulmonary recovery. (Extra pulmonary MDR-TB had longer recovery time than pulmonary MDR-TB).

Due to MDR-TB, patients who reside in urban areas (62.7%) have a higher likelihood of recovering than those who reside in rural areas (60.3%). recovery rates for MDR-TB among drinkers and smokers were 61.9% and 42.5%, respectively. Most of the patients (61.4%) were recovered at the age group between 18 to 64 years. HIV negative individuals recovered from MDR-TB at a higher incidence (61.1%) than HIV positive patients (36%). Patients with no prior drug history had a greater recovery rate (64.28%) than patients with a history of drug use (60.6%).

The recovery rate of patients increases with increasing baseline weight, education level, and occupation. But, the recovery rate decreases with smoking, co-morbidities, previous drug history, history of TB, and alcohol use.

3.1.1 Comparison of survivorship functions

The main focus was on estimating the survival function for time to recovery across various covariate groups to compare their distributions. To obtain a more detailed estimate of the survival time, we employed the Kaplan-Meier estimation techniques. This method is crucial for analyzing censored data [16,27]. The resulting Kaplan-Meier survival function curve illustrated both the overall estimated survivor function and distinct groups of predictors. Notably, the overall estimated survivor function indicated that patients with MDR-TB achieved recovery after a 22-month treatment period.

The survival curve generated by the Kaplan-Meier estimator illustrated both the collective estimated survivor function and distinct predictor groups. Evidently, the overall estimated survivor function indicated that individuals with MDR-TB

experienced recovery following 22-month treatment duration.

As we can see from above km estimated categorical variables the recovery time of patients was the difference between HIV status, smoking status, Residence, education level, Alcohol use and MDR-TB type, sex whereas, marital status, Adherence; history of TB and occupation did not show a clear difference in the Fig. 1.

3.1.2 Parametric shared frailty model results

Parametric-shared frailty models were applied, considering the Exponential, Weibull, and log-normal distributions for the baseline hazard function. The Gamma distribution, commonly employed in literature to assess frailty effects [23,26], was specifically chosen. Consequently, the study involved fitting both the Gamma frailty model and the Weibull Gamma shared frailty model, with hospitals serving as the random (frailty) component, to determine the most suitable model.

The AIC for the Weibull gamma shared frailty (-2375.33) was smaller than the AIC for the Weibull AFT (-222.56) models. The frailty for the selected model was estimated to be 1.467 (chi-square = 53.42, df = 1, p-value = 0.0000) which indicated existence of unobserved heterogeneity between the hospitals and it was observed that the inclusion of the frailty component in the model was significant. The result also showed that the value of the shared frailty (θ) is 1.467, 1.36, 0.527 and 0.157 for Weibull, Log-logistic, Exponential and Lognormal gamma shared frailty models respectively; the heterogeneity between clusters was high when estimated by Weibull gamma shared frailty model, which were 1.46. The Kendall's tau (τ) is higher for higher values of theta (θ) which measure the association within region. The estimated $\tau = 0.424$ shows that there is strong dependence within the cluster or region. This indicates Weibull-gamma shared frailty model is more efficient model to describe time-to-recovery from MDR-TB. And also it implied that the frailty component had significant contribution to the model.

3.1.3 The cox snell residual plots

The Cox-Snell residuals offer a distinctive approach to assess the goodness of fit of the model to the data. It's notable that the plot

depicting the cumulative hazard function against Cox-Snell residuals closely aligns with the 45-degree straight lines originating from the origin for the Weibull model when compared to exponential, Log-normal and Log-logistic. Therefore overall goodness of fit for the AFT

model was checked by these Cox-Snell residual plots [15]. This suggests that Weibull model provided the best fit for the recovery time of MDR-TB patients. The plots indicate that the Weibull model fits the data best and that the other model fits poorly.

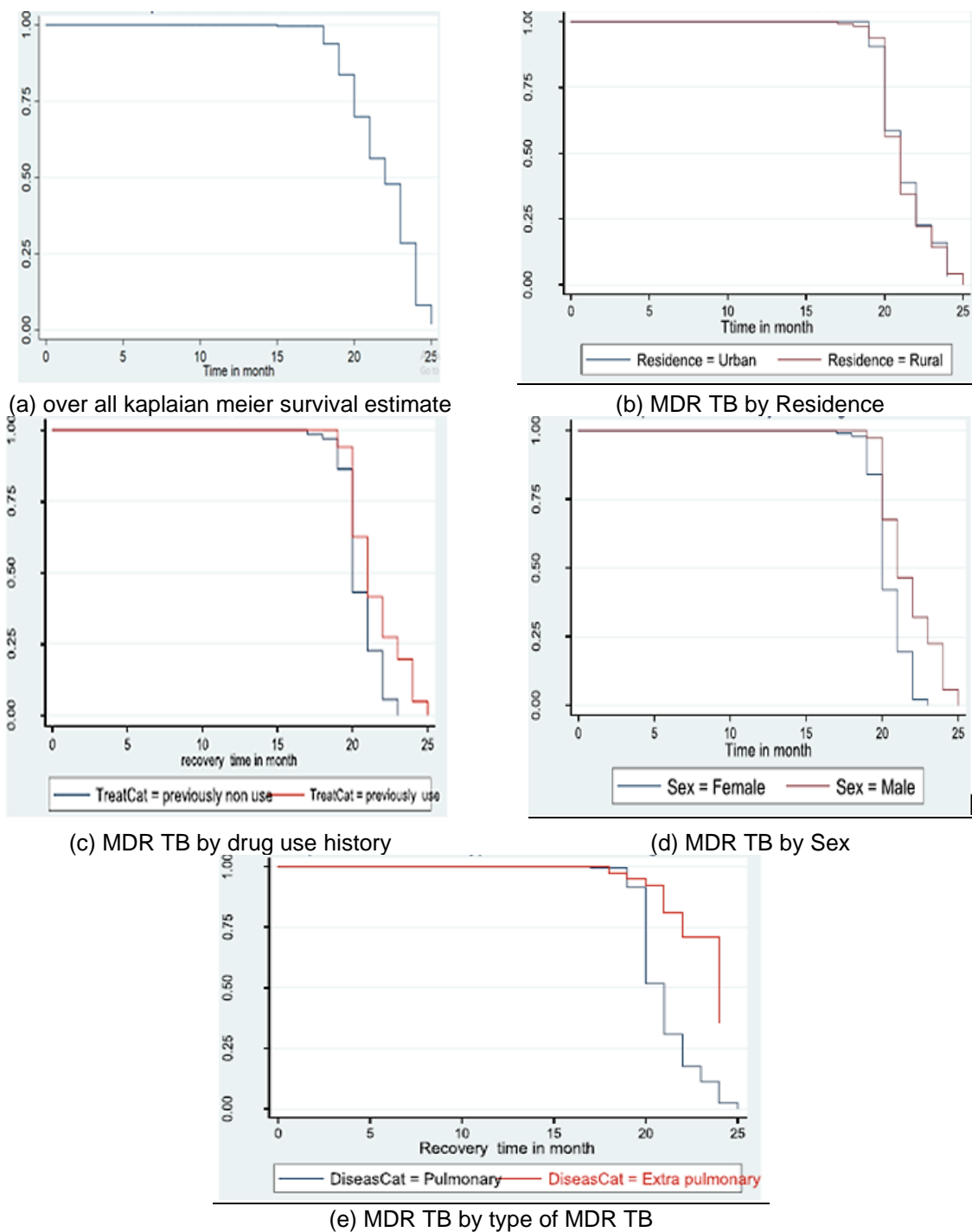


Fig. 1. Estimate of the KM Survival function for the recovery time of MDR-TB patients in SNNP among category of categorical variables by (a) overall (b) residence (c) drug use history (d) sex (e) type of MDR-TB

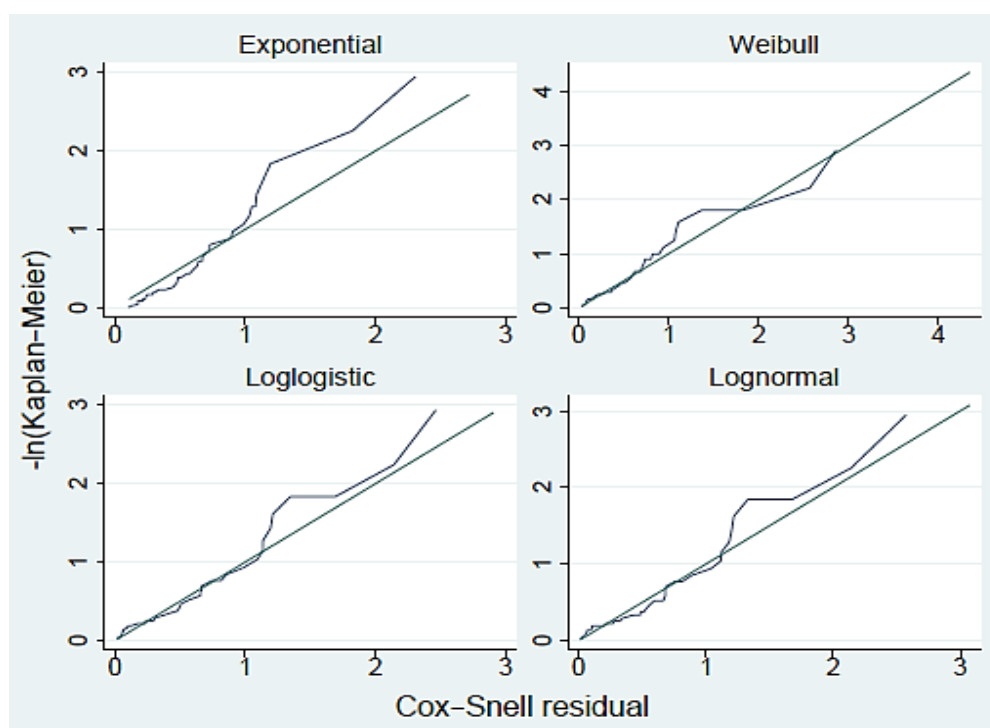


Fig. 2. The Cox–Snell residual plots to evaluate model fit of four regression models Exponential, Weibull, log logistic and lognormal distributions

3.1.4 Multivariable Analysis and Model Comparison results

The multivariable survival analysis was performed supposing the Exponential, Log-logistic, Weibull, and log-normal for the baseline hazard function and the gamma frailty distributions. Covariates that were not significant in the univariable analysis were not included in the multivariable analysis. It is done by using all significant covariates in Univariate analysis at 25% level of significance. Model comparison was done using the covariates that are significant in multivariable analysis. To compare the efficiency of different models. the AIC value of the Weibull-AFT model was -222.56 which was the minimum value, compared to all the other models and the largest value of log likelihood is Weibull-AFT model, compared to all others model. Hence, the

Weibull-AFT model was the most efficient model to describe the dataset of patients with MDR-TB.

The recovery time from MDR-TB in southern parts of Ethiopia was carried out by the Weibull Gamma shared frailty model with hospitals as a clustering effect. Table 5 depicted the result of Weibull Gamma shared frailty model of parameter estimates, standard error of estimates, z-value, p-values, Time ratios and 95% CI. the Weibull-Gamma shared frailty model result depicted the covariates are baseline weight, sex, smoking history, co-morbidities, residence of patients, previous drug history, education level, occupation of patients, history of TB, MDR-TB type and alcohol use were significantly determine the time to recovery from MDR-TB.

Table 4. Model selection based on information criteria from AFT

AFT models	Information criteria (IC)		
	AIC	log-likelihood	Best model
Exponential	554.86	-264.43	Weibull
Log-normal	-221.68	123.5	
Weibull	-222.56	124.28	
Log-logistic	-211.256	118.628	

AIC Akaike's information criteria, AFT Accelerated failure time

Table 5. Multivariable analysis using Weibull shared Gamma frailty model for the recovery time of MDR-TB patients in SNNP region, Ethiopia

Variables	Categories	Estimates	Std.err	Z	T.R(Φ)	p> z	95% CI for estimate
Weight (kg)	Continuous	0.024	0.00247	9.87	1.025	0.00	[0.0195,0.029]
Age	0-17 years ^R				1		
	18-64 year	0.517	0.0967	5.34	1.053	0.120	[0.327,0.7070]
	Above 65	0.193	0.0754	4.49	1.21	0.750	[0.120,0.2312]
Sex	Male ^R				1		
	Female	0.182	0.0713	2.56	1.20	0.011	[0.0425,0.322]
HIV_status	Negative ^R				1		
	Positive	0.0973	0.0956	1.02	1.102	0.309	[-0.090,0.285]
Smoking status	Non Smok ^R				1		
	Smoker	0.0234	0.078	0.30	1.023	0.00	[-0.13,0.176]
Residence	Rural ^R				1		
	Urban	0.230	0.042	0.64	1.26	0.002	[0.04,0.47]
Adherence	Good ^R				1		
	Poor	0.031	0.032	1.32	1.35	0.201	[0.01,1.06]
	Fair	0.184	0.0466	3.94	1.20	0.765	[0.093,0.275]
Co-morbidities	No ^R				1		
	Yes	0.196	0.083	2.35	1.216	0.019	[0.033,0.36]
Previous drug history	No ^R				1		
	Yes	0.45	0.112	4.03	1.57	0.00	[0.231,0.67]
MDR-TB type	Pulmonary ^R				1		
	Extra pulmonary	-0.068	0.115	-0.59	0.934	0.006	[-0.293,0.159]
Occupation	Farmer ^R				1		
	Employee	0.071	0.025	3.09	1.073	0.002	[1.026,1.12]
	Merchant	0.152	0.0383	3.98	1.164	0.231	[0.078,0.23]
	Others						
Education level	Secondary ^R &above				1		
	Primary	-0.007	0.014	-0.053	0.993	0.613	[-0.966,1.021]
	No education	0.114	0.0354	3.14	1.12	0.002	[0.0419,0.180]
History of TB	No	0.213	0.074	2.90	1.24	0.004	[0.069,0.358]
	Yes ^R				1		
Alcohol use	No	0.048	0.076	0.63	0.510	0.000	[-0.526,0.103]
	Yes ^R				1		
Constant		0.126	0.035	89.09	1.13	0.000	[3.057,3.195]
Frailty variance (θ)	$\theta = 1.47, \lambda = 1.87, \tau = 0.424$						

R: Reference, Coef: Coefficient of parameter, SE (): standard error for; φ = Acceleration factor; (*): 95%CI: 95% confidence interval for (φ); θ = frailty variance; λ = scale parameter; γ = Shape parameter, τ , Kendall's tau

An acceleration factor (time ratio) (Φ) greater than 1 specifies prolonging the time of recovery. the acceleration factors (Φ) for patients with non alcohol use were 0.51. This implies that the non alcohol users had a shorter time to recovery, compared to alcohol users. in addition the result shows that the increase of baseline weight ($\Phi = 1.03$; coeff= 0.0244; 95%CI of coefficient: 0.01954, 0.0292) led to an increase in the recovery time. The study showed that the Patients with extra-pulmonary had an acceleration factor (time ratio) of 0.934 [95%CI of estimate: -2933, 0.1578] which indicated that the patients with pulmonary MDR-TB have shorter Recovery time in comparison with extra-pulmonary MDR-TB patients. Patients who live in urban areas have a longer recovery time than those who live in rural areas ($\Phi = 1.26$; 95%CI [0.04, 0.47]. female MDR-TB patients were experiencing longer recovery time than that of male MDR-TB patients. This means that female MDR-TB patients significant when we see it with reference group (male MDR-TB) [28]. The MDR-TB patients with co-morbidity also experienced longer recovery time than that of the reference groups. Acceleration factor of MDR-TB Patients who have previous drug history ($\Phi = 1.57$) had a longer recovery time than patients with no previous drug history of MDR-TB patients. And also MDR-TB patients with smoking history ($\Phi = 1.023$; Coeff = 0.0234; 95CI of coefficient = -0.13, 0.176) had longer recovery time than MDR-TB patients who had No smoking history (reference group). Finally the result showed for employed of MDR-TB patients takes more time to recovery than reference group.

3.2 Discussion

The main goal of the study was to investigate time to recovery from multidrug resistance tuberculosis among selected hospitals in southern Ethiopia using AFT and parametric shared frailty models by considering baseline distributions Weibull and gamma frailty.

“Given the close monitoring of patients while taking these medications, the median recovery duration of MDR-TB patients in the southern region was 22 months, which indicates that the recovery period of patients is within the advised treatment interval of 18 to 24 months or longer” [1].

“In comparison to the Log-normal, Log-logistic, Exponential, Gamma, and Gamma AFT models, the Weibull AFT model had the lower AIC. After selecting the Weibull AFT model, the data onto

the Weibull AFT, Gamma frailty, and Weibull Gamma shared frailty models were effectively fitted. This is because of the model lifetime, Weibull distribution is mostly used in the literature as the Hazard rate for Weibull distribution is a monotone function” [16,27].

The clustering effect of the hospitals was one of the elements this study found to be connected to the recovery times of MDR-TB patients in Southern Ethiopia. the clustering effect was substantial (p-value 0.001) in the Weibull-gamma shared frailty model, indicating that there is heterogeneity between institutions and that individuals within the same hospital share similar risk factors on recovery time.

“The finding of this study showed that the percentage of MDR-TB was highest in the age group (18-64 years) and it was in agreement or in line with the results of studies conducted in Amhara region of Ethiopia” [28]. These kind of findings may attributed to the increased mobility observed in this age group, which could be driven by economic and social factors.

“This study showed that extra pulmonary MDR-TB patients had longer recovery time than that of pulmonary MDR-TB patients in Southern region, Ethiopia”, and it was supported by Limenih.A et.al, 2019 [28].

“Female MDR-TB patients were associated with a high likelihood of experiencing treatment outcomes. Some other studies have disagree shown that male MDR-TB patients tend to have shorter recovery time” [27,28]. But this study means that female MDR-TB patients were experiencing longer recovery time than that of male MDR-TB patients. The MDR-TB patients with co-morbidity also experienced longer recovery time than that of the control groups. This result is in line with the previous findings in Ethiopia [29] and in India [27].

“In this study, the patients with not educated MDR=TB patients had longer recovery time in comparison with the reference group. This finding was supported with those of the studies performed in Ethiopia this could be due to the lack of awareness of people with lower levels of education about their health issues. Moreover, they might have had no access to media, such as social media” [28].

The study's participants were smokers and Khat users in proportions of 7.3% and 20,1%, respectively, in terms of social drug usage.

Getachew et al. (2017) found that 5.32% of study participants who were smokers in St. Peter TB Specialized Hospital were equivalent to the study's results [29].

The findings of this study are comparable to those of a study done in Tanzania, where cigarette smoking was 5% and alcohol consumption was 18% (Nyaki et al., 2016) [30].

According to the study's findings, smoking habits and a history of drug use were both significant predictors of recovery time in the southern region. This demonstrates that patients without a history of smoking take longer to recover than patients who have used drugs in the past. This was in line with the findings of Kuaban et al's study [31].

4. CONCLUSION

The objective of this study was to investigate recovery time of MDR-TB patients in selected treatment centers (Hospitals) at the Southern parts of the country. Retrospectively we obtained a cluster random sample of 301 patients from selected treatment centers. Among the 301 patients, 185 (61.5%) were recovered, and the remaining 38.5% were censored. Due to the clustering effects of patients within the treatment centers in relationship with recovery time from MDR-TB the study employed parametric shared frailty model and also employed accelerated failure time models.

Analyses of exploratory data were conducted using graphical and numerical methods. The results showed that individuals with MDR-TB experienced a median recovery time of 22 months, with a minimum and maximum recovery time of 18.5 and 24 months, respectively. Patients with MDR-TB who were included in the analysis had baseline mean and median weights of 46.52 and 48.5, respectively. Based on the findings from the KM estimate; females, rural residents, pulmonary MDR-TB type, none alcohol users, none smokers, educated patients, patients who have co-morbidities, and patients who have previous drug history have relatively better recovery rate. This was evidenced from the Logrank and Breslow test results.

Weibull-Gamma shared frailty model was the final selected model based on AIC to explain time to recovery dataset of MDR-TB patients. The finding from the final fitted model indicated, the variables significantly influencing the MDR-

TB patients time to recovery were sex, baseline weight, Alcohol use, smoking cigarette, History of TB, Co-morbidities and category of MDR-TB or MDR-TB type, education level, previous drug history, occupation of patients and place of residence.

Based on this study we recommend that the regional and federal Government of Ethiopia need to take immediate steps to address the causes of long recovery time of MDR-TB patients in SNNP region by promoting adherence to treatment, early detection of cases, and proper management of drug susceptibility in alignment with WHO guidelines, efforts can be directed towards improving recovery rate and effectively managing MDR-TB patient death. Further studies with a possible revision to the MDR-TB and XDR-TB management strategy at the centers are necessary.

CONSENT AND ETHICAL APPROVAL

It is not applicable.

ACKNOWLEDGEMENTS

The authors acknowledge the Wachemo University, College of Natural and computational science and all SNNPR MDR-TB treatment initiation center focal person for their commitment to providing the necessary information.

COMPETING INTERESTS

Authors have declared that no competing interests exist.

REFERENCES

1. World Health Organization. Global tuberculosis report 2019. Geneva: World Health Organization; 2019.
2. Teramaji W, Abiyot N. Modeling time to death on MDR TB in Jimma: JRHS; 2021.
3. Federal ministry of health. Federal Ministry of Health and health related indicators 2005 E.C (2012/2013); 2014.
4. Federal ministry of health. Guideline for program and clinical management of drug resistant tuberculosis; 2019.
5. World health Organization. Treatment of tuberculosis guidelines. Geneva: World health Organization; 2020. Available: <https://www.ncbi.nlm.nih.gov/books/NBK138748/>.

6. Chung-Delgado K, Guillen-Bravo S, Revilla-Montag A, Bernabe-Ortiz A. Mortality among MDR-TB cases: Comparison with drug-susceptible tuberculosis and associated factors. *PIOS ONE*. 2018;10(3):e0119332. Available: <https://doi.org/10.1371/journal.pone.0119332> PMID: 25790076
7. Nigus D, Lingerew W, Beyene B, Tamiru A, Lemma M, Melaku M. Prevalence of multi drug resistant tuberculosis among presumptive multi drug resistant tuberculosis cases in Amhara National Regional State, Ethiopia. *J Mycobac Dis*. 2014;4(152):2161 DOI:1068.1000152.
8. Cochran WG. *Sampling techniques*. 3rd. New York: Wiley; 1977.
9. Fan J. *Local polynomial modelling and its applications: Monographs on statistics and applied probability 66*. New York: Routledge; 2018.
10. Van der Meulen A. *Life tables and survival analysis*. The Hague: Statistics Methods Statistics Netherlands; 2012.
11. Brookmeyer R: Median survival time. *Wiley StatsRef: Statistics Reference Online*; 2014.
12. Reid N. Estimating the median survival time. *Biometrika*. 2001;68(3):601–8.
13. Kleinbaum DG, Klein M. Kaplan-Meier survival curves and the log-rank test. In: *Survival analysis*. New York: Springer. 2016;55–96.
14. Collett D. *Modelling survival data in medical research*. New York: Chapman and Hall/CRC; 2015.
15. Cox DR. Regression models and life-tables. In: *Breakthroughs in statistics*. New York: Springer; 2008;30(2):248-755,27–41.
16. Gutierrez RG. Parametric frailty and shared frailty survival models. *Stata J*. 2002;2(1):22–44.
17. Pike M. A method of analysis of a certain class of experiments in carcinogenesis. *Biometrics*. 1966;22(1):142–61.
18. Bennett S. Analysis of survival data by the proportional odds model. *Stat Med*. 1983;2(2):273–7.
19. Van den Berg GJ. Duration models: specification, identification and multiple durations. In: *Handbook*; 2016
20. Aalen O, Borgan O, Gjessing H. *Survival and event history analysis: a process point of view*. New York: Springer Science & Business Media; 2008.
21. Hougaard P. Survival models for heterogeneous populations derived from stable distributions. *Biometrika*. 1986; 73(2):387–96.
22. Caroni C, Crowder M, Kimber A. Proportional hazards models with discrete frailty. *Life time Data Anal*. 2010;16(3): 374–84.
23. Askin OE, Inan D, Buyuklu AH. Parameter estimation of shared frailty models based on particle swarm optimization. *Int J Stat Probab*. 2017;6(1):48–58.
24. Akaike H. A new look at the statistical model identification. *IEEE Trans Autom Control*. 1974;19(6):716–23.
25. Munda M, Rotolo F, Legrand C. Parametric frailty models in R. *J Stat Softw*. 2012;51(11):1–20.
26. Wienke A. *Frailty models in survival analysis*. New York: Chapman and Hall/CRC; 2010.
27. Tavakoli A. Incidence and prevalence of tuberculosis in Iran and neighboring countries. *Zahedan J Res Med Sci*. 2017; 19(7):e9238.
28. Limenih A, Workie Limenih D. Survival analysis of time to cure on multidrug resistance tuberculosis patients in Amhara region, Ethiopia *BMC Public Health*; 2019.
29. Girum T, Tariku Y, Dessu S. Survival status and treatment outcome of multidrug resistant tuberculosis (MDR-TB) among patients treated in treatment initiation centers (TIC) in South Ethiopia: a retrospective cohort study. *Ann Med Health Sci Res*. 2017;7(5):331–36.
30. Mitku AA, Dessie ZG, Muluneh EK, Workie DL. Prevalence and associated factors of TB/HIV co-infection among HIV infected patients in Amhara region, Ethiopia. *Afr Health Sci*. 2016;16(2):588–95.
31. World health organization companion handbook to the WHO guidelines for the programmatic management of drug-resistant tuberculosis. Geneva: WHO; 2019.
32. Ababa A. Federal democratic republic of Ethiopia central statistical agency population projection of Ethiopia for all regions at wereda level from 2014 – 2017; 2017.
33. Limenih YA, Workie DL. Survival analysis of time to cure on multi-drug resistance tuberculosis patients in Amhara region, Ethiopia. *BMC public health*. 2019 Dec;19: 1-1.

APPENDIX

Table 6. Unavailable analysis using Weibull shared Gamma frailty model for the recovery time of MDR-TB patients in SNNP region, Ethiopia

Variables	Categories	Estimates (β)	Std.err	Z	T.R (Φ)	p> z	95% CI for estimate
Baseline Weight (kg)	continuous	0.079	0.0021	37.68		0.000	[0.0765,0.082]
Treatment center	NEMMCSH ^R				1		
	Butajira	3.76	0.29	12.82		0.123	[3.42,4.09]
	Arbamich	1.267	0.05	5.32		0.531	[1.12, 1.45]
Age	0-17 years ^R				1		
	18-64 year	3.80	0.155	24.4		0.000	[3.61, 3.97]
	Above 65	0.70	0.045	3.45		0.012	[0.52, 2.10]
sex	Male ^R						
	Female	4.61	0.362	12.75		0.000	[4.2, 5.03]
HIV_status	Negative ^R				1		
	Positive	5.25	1.062	4.95		0.000	[4.03, 6.47]
Smoking status	Non Smok ^R				1		
	smoker	5.25	0.76	6.90		0.001	[4.37, 6.13]
Residence	Rural ^R				1		
	Urban	3.76	0.30	12.82		0.0001	[3.18, 4.35]
Adherence	Good ^R				1		
	Poor	1.47	0.012	19.45		0.002	[1.44, 1.50]
	Fair	3.96	0.264	14.21		0.000	[3.39, 4.43]
Co-morbidities	No ^R						
	Yes	6.13	1.02	6.00		0.002	[4.96, 7.31]
Previous drug history	No ^R				1		
	Yes	4.34	0.24	18.42		0.000	[3.87, 4.80]
MDR-TB type	Pulmonary ^R				1		
	Extra pulmonary	5.50	1.178	4.66		0.001	[4.14, 6.85]
Occupation	Farmer ^R				1		
	Employee	2.85	0.155	18.37		0.004	[2.55, 3.16]
	Merchant	0.95	0.12	11.23		0.045	[0.5, 1.25]
	Others	1.25	0.026	1.21		0.780	[0.96, 2.31]
Education level	Secondary ^R &above				1		
	Primary	0.93	0.048	9.03		0.850	[0.56, 1.53]
	No education	2.11	0.111	19.02		0.043	[1.90, 2.34]
History of TB	No	4.63	0.33	14.0		0.000	[3.98, 5.30]
	Yes ^R				1		
Alcohol use	No	4.32	0.34	12.30		0.002	[2.38, 4.75]
	Yes ^R				1		

Univariable analysis in order to see the effect of each covariate on time-to recovery from MDR-TB to the multivariable analysis at 25% level significance [25]

MODEL DIAGNOSTICS

Checking adequacy of parametric baselines using graphical methods

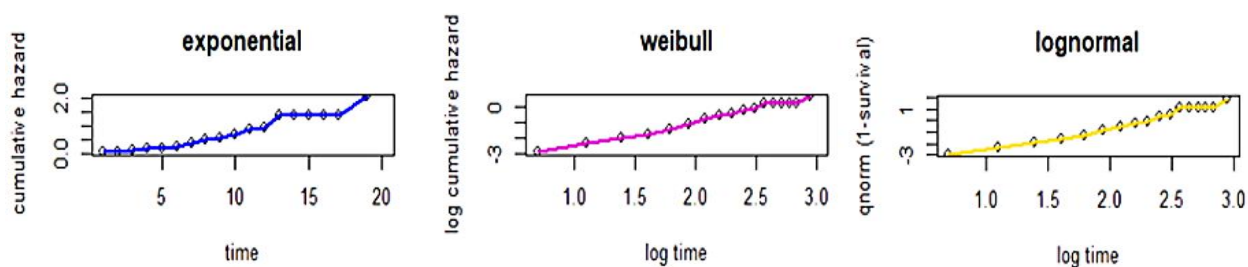


Fig. 3. Parametric assumption testing models

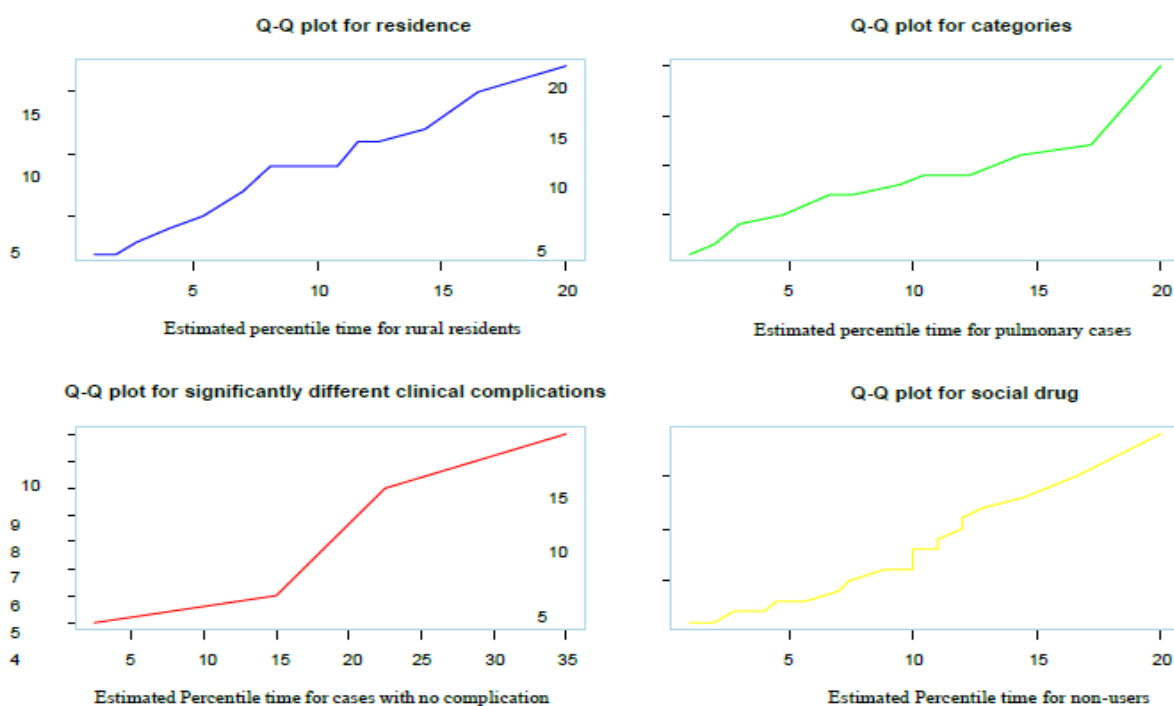


Fig. 4. Quantile-quantiles plot (Q-Q plot) to check the adequacy of the accelerated failure time models

© Copyright (2024): Author(s). The licensee is the journal publisher. This is an Open Access article distributed under the terms of the Creative Commons Attribution License (<http://creativecommons.org/licenses/by/4.0>), which permits unrestricted use, distribution, and reproduction in any medium, provided the original work is properly cited.

Peer-review history:
The peer review history for this paper can be accessed here:
<https://www.sdiarticle5.com/review-history/116263>