



# Distribution of Soil Chemical Properties of Smallholder Farms on Derelict Mined-Sites of Jos South LGA, Jos Plateau, Nigeria

John Bathrobas Dakagan <sup>a,b\*</sup>,  
Ibrahim Yakubu Tudunwada <sup>a,c</sup>, Samson Ajik Ajiji <sup>a,b</sup>  
and J. A. Aliyu <sup>d</sup>

<sup>a</sup> National Space Research and Development Agency (NASRDA), Abuja Nigeria.

<sup>b</sup> National Centre for Remote Sensing (NCRS) Jos, Nigeria.

<sup>c</sup> Centre for Atmospheric Research CAR-NASRDA, Nigeria.

<sup>d</sup> Crop and Forestry Department, National Agricultural Extension and Research Liaison Services PMB 1067, ABU Zaria, Nigeria.

## Authors' contributions

This work was carried out in collaboration among all authors. All authors read and approved the final manuscript.

## Article Information

DOI: 10.9734/AJSSPN/2024/v10i1208

## Open Peer Review History:

This journal follows the Advanced Open Peer Review policy. Identity of the Reviewers, Editor(s) and additional Reviewers, peer review comments, different versions of the manuscript, comments of the editors, etc are available here: <https://www.sdiarticle5.com/review-history/104004>

Original Research Article

Received: 05/06/2023

Accepted: 08/08/2023

Published: 16/01/2024

## ABSTRACT

Tin mining environments have constituted a degrading challenge to smallholder farmers whose lands have been overtaken. Attempts by smallholder farmers to restore the lands to farming are faced with soil productivity constraints. Yet, these farmers struggle to cultivate farms in-between the mined lands to meet up with subsistence food requirements. To date, the farmers have identified areas with low and high potentials due to years of continuous cultivation. This study was conducted

\*Corresponding author: Email: [hibathy2010@yahoo.com](mailto:hibathy2010@yahoo.com);

in an environment that had undergone mining on a larger scale and is now undergoing surface mining on a small scale. Thirty-one (31) soil samples were taken at a depth of 0-20cm to investigate the spread of soil chemical properties on smallholder farms. Coordinates of the samples were acquired using GPS to create georeferenced continuous surfaces. The results indicated that the majority of the soil's chemical properties varied moderately. Organic matter (0.89-1.74%) and nitrogen (0.045 - 0.096%) needed mostly by crops were very low due to uninformed distribution of soil chemical properties. Geostatistics was used to generate continuous surfaces through Kriging. The small nugget effect showed spatial continuity between the neighboring points. Strong spatial dependence occurred for all soil nutrients tested, due to intrinsic soil properties such as soil parent material, topography, texture, and mineralogy. Generally, the spread of soil nutrients on the smallholder farm coincides with the smallholder farmers' identified potential areas. The study suggests that for proper nutrient interventions on the farms, distribution of soil nutrients on the farms should be done to avoid excesses and shortages of inorganic and organic interventions.

*Keywords: Smallholder; nutrients; distribution; mining; fertility.*

## 1. INTRODUCTION

Continuous cultivation of farmlands with declining soil fertility by smallholder farmers has remained a persistent constraint to crop yield improvement in sub-Saharan Africa (SSA). This leads to low productivity as a result of low inherent soil fertility, soil nutrient depletion, and limited nutrient inputs [1, 2, 3]. The region has eventually sustained low crop yields, which is a major threat to food security and rural livelihoods [4, 5]. The declining soil fertility results from poor management of arable lands and the changes introduced on cultivated smallholder farms. This requires an enabling policy environment for the smallholder farming sector through inputs; restoring soil fertility; and making sustainable intensification with high-value products [6].

The pressure of nutrient deficiencies at the smallholder scale is intense in SSA because arable land is put to different uses that are mostly unsustainable, and is severely depleted of vital nutrients [7]. The major challenge in some agricultural lands is the conversion of such lands for other purposes, which worsens the degradation. Tin mining is one activity that has affected agricultural lands and lowered food production. Dumping and tailing areas have very low soil fertility because tailing areas have lost soil colloids during the spraying process; while reversal of soil layers due to the "cut and fill" processes have occurred in the dumping sites. Therefore, topsoil is mixed or overturned, leaving nutrient-deficient soil for crops to grow on [8]. This becomes more serious when there is poor management from smallholder farmers. No wonder, 80% of arable land in Africa has low soil fertility from physical soil degradation due to unsustainable soil management practices [9].

The consequential effects of changes on agricultural lands are the alteration of the soil's chemical, physical, and biological properties, especially where there is a sustained nutrient inputs intervention without knowledge of the distribution of soil properties. Unfortunately, the nutrients (N, P, K) that influence crops the most, are yet the most variably misunderstood. This similar view was reported by Tabi et al [10], where they stated that any soil intervention through inputs without precise knowledge of both physical and chemical properties to recover fertility homogeneity could be an exercise in futility. Knowledge of soil properties before designing site-specific input applications is a necessity that leads to better management decisions toward productive sustainability of the soil [11, 12, 13, 14, 15].

Aligning with this is the submission that due to soil heterogeneity, soil properties variation has now become a prerequisite for optimal and sustainable agricultural production [16]. It is the failure to follow due precision for input intervention that results in shortages and excesses in different areas even on the same plot of land under smallholder cultivation [17]. Spatial knowledge of soil variation can help in managing the productivity of arable lands by tailoring agricultural inputs to fit the spatial requirements of soils and crops [18].

In the tin mining areas of Jos Plateau, much large-scale tin mining had occurred in the past, leaving behind unproductive lands for smallholder farmers to cope with. At present, the initially mined areas are undergoing mining again, and in most cases affect the cultivated lands through dumps and even water from the mining wells. Some of the farms in between the mined areas are identified by farmers as

productive or non-productive areas even on the same cultivated plots of land. Familiarity with cultivated plots and years of input application has not amended smallholder farms. This area of Jos South local government area is extensively mined, and highly overburdened by infertile deposits [19, 20]. Therefore, agricultural land is becoming limited on the Jos Plateau due to mining activities, and these mined areas are poorer in agricultural value than areas where mining has not occurred.

Ishak et al [8]. made known that the soils of an abandoned tin-mining area in Bangka Belitung Islands were acidic, with low OC, N, P, K, Ca, Mg, and CEC levels. In a similar study, Shamshuddin, Mokhtar and Paramanathan [21] revealed that the bases, organic carbon, phosphorus, and nitrogen contents were very low, cation exchange capacity was low, but pH was very high in an ex-mining land in IPoh, Perak. Agus et al [22]. also researched on the role of soil amendment in tropical post-tin mining areas in Bangka Island Indonesia for a dignified and sustainable environment and life. They reported that post-tropical tin mining acid soil of (pH 4.97) was dominated by sand particles (88%) with very low cation exchange capacity, very low nutrient contents (N, P, K, Ca, Mg), and high toxicity of Zn, Cu, B, Cd, and Ti, but still have low toxicity of Al, Fe, Mn, Mo, Pb.

Arefieva et al [23]. published a significant negative correlation between pH and the content of metal compounds including chromium and copper at "Avangard" mine ( $r=-0.95$ ); and between alkalinity and chromium content at the "Glubokaya" mine ( $r=-0.94$ ). In a like manner, Rachman et al [24]. showed degraded lands, very low organic matter content; the lowest clay

content; the highest soil bulk density and low soil porosity; and the highest sand content. Essandoh et al [25]. publicized that soils from mined sites with unfilled/partially filled pits had higher levels of K, Mg, and Na. As mined sites' fallow period increased, concentrations of OC and Cd increased, while Ca, Mg, pH, Cu, Pb, S, and EC decreased.

Ideriah and Abere [26] reported sandy clay loam; acidic and deficient in N, P, and exchangeable bases in non-vegetated tin mine spoilt soils on Jos Plateau. Concentrations of most parameters were higher in the cultivated spoilt soils than in the uncultivated spoilt soils. Organic wastes and town refuse ash were recommended for soils in the area. Irrigation with mining pond water should be done with caution as it could be toxic to some crops. Likewise, in the findings of [27], tin mining activities reduced farmland through soil erosion problems, the swampy nature of neglected mined excavation, mine dumps, and pits on the arable land in Jos South LGA of Plateau state.

From the early researches conducted on soil property variation on tin-mined cultivated soils, there is need for site specific (one site) and precise nutrient intervention in order to improve soil productivity through the requisite knowledge of the distribution of soil chemical properties on smallholder farms.

## 2. MATERIALS AND METHODS

### 2.1 Study Area

The study area is Jos South Local Government Area, located within latitudes 9° 45' 22" N and 9° 45' 24" N, and longitudes 8° 51' 4" E and 8° 51' 7" E (Fig.1).

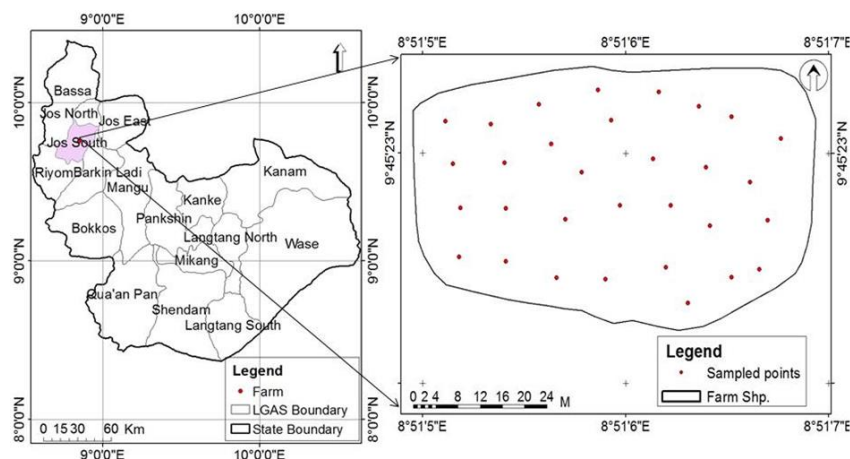


Fig. 1. Plateau state showing the study area

The study area has cool climatic conditions due to its altitude. The coldest period is between November and February with an average mean daily temperature of 18 °C, while it gets warm between March and April before the onset of rain. The rainy season, which is between April and October, has its peak in August. According to Gwom [28], the people were predominantly farmers and hunters, but the early occupation of the inhabitants has been overtaken by mining activities. Common food crops grown in the area include Irish potato, sweet potato, maize, millet, Hungary rice, tomato, and many other varieties of vegetables [27]. The area has a mean monthly temperature range of 20-24 °C and annual total rainfall of 1400 mm which falls primarily from April to October [29].

## 2.2 Sampling and Sample Preparation

Thirty-one (31) soil samples were taken at a depth of 0-20cm to investigate the spread of soil chemical properties on smallholder farms. Coordinates of the soil samples were acquired using GPS to create georeferenced continuous surfaces. Soil samples were taken from each smallholder location, then mixed and taken to the laboratory for analysis.

## 2.3 Soil Laboratory Analysis

The soil samples were analyzed for primary nutrients (N, P, and K), secondary nutrients (Mg and Ca), pH, and Organic Matter (OM). The pH was determined using a glass electrode pH meter [30]. Soil OM was determined using Walkley-Black wet oxidation method [31]. Nitrogen was determined using the micro-Kjeldahl digestion method [32]. Phosphorus, exchangeable cation (K<sub>e</sub>) was analyzed using Mehlich 3 extraction procedure [33] and reading with ICP-OEC. Ca and Mg were analyzed using the EDTA titration method [34]. Exchangeable acidity (H<sup>+</sup> + Al<sup>3+</sup>) was determined by shaking soil with 1N KCl and titration with 0.5N NaOH [35].

## 2.4 Data Analysis

Statistical analysis was done on the primary data using Microsoft Excel and ArcGIS 10.3. Descriptive statistics like percentages, mean, minimum, maximum, standard deviation, and coefficient of variation were derived for variation

of soil chemical property within the smallholder farm.

### 2.4.1 Coefficient of variation

The coefficient of variation was used to understand the classical variation of the soil properties on the farm. Based on the coefficient of variation (CV) values, variability was classified as low (0–15%), medium (15–75%), and high (>75%) [36].

### 2.4.2 Geostatistical analysis

The georeferenced point dataset for each soil variable was run on the different models, and the best-fitted models were used to generate the best-fit experimental semivariogram. The stable model was the most fitted for most of the soil properties. Nugget (C<sub>0</sub>), partial sill (C), range (A), and sill (C + C<sub>0</sub>), and nugget/sill ratio were also extracted from the suitable semivariograms of the fitted models. The spatial dependence of the soil properties as ordered by Cambardella et al. [37]; Ersahin [38]; and Robertson [39] where strong spatial dependence if the nugget/sill ratio is <25, moderate if the ratio is between 25 and 75%, and weak if the ratio is >75% were adopted. In the case of coefficient of variation (CV) values, the variability of soil properties was classified as low (0–15%), medium (15–75%), and high (>75%) [36, 40]. Best fit models were determined based on the RMSSE value close to 1, and ME close to zero [41].

## 3. RESULTS

### 3.1 Descriptive Nature of Soil Chemical Properties

The pH ranged from 5.63-6.5 and is due to attempts by smallholder farmers to improve soil fertility through the blanket applications of organic and inorganic fertilizers over a long time. The soils are slightly acidic and within the range for most crops [42] (Table 1). The OM ranged from 0.89-1.74% is very low according to Landon [43] (Table 1). This is due to continuous cultivation and extraction by crop, low manure application, and residue removal for cooking purposes. Nitrogen ranged from 0.045 - 0.096% which is very low [44]. The low nitrogen is due to uniform application, low amount of N-fertilizer applied, and continuous cultivation of the farm by the farmer. The implication is the successive low yields recorded by the farmer, and until precise nutrient intervention is made, the declining yield

will continue. The smallholder plot undergoes both rainy and dry season cultivation.

Lower variability was observed for pH, Ca, and  $H^+ + Al^{3+}$ . The lowest coefficient of variation was observed in Ca with a value of 1.19%, which could be as a result of the uniform conditions in the area such as little changes in slope and its direction leading to a uniformity of soil in the area. All the other nutrients (OM, N, P, Mg, and K) had medium variability (Table 1). The implication of these on the farm is that unless the variation is spatially understood and minimized, instances of varied crop performances will continue at close ranges. That will negatively affect crop yield on the farm. The highest variability of soil nutrients was P with a value of 50.54%, meaning there is high dissimilarity in P distribution on the smallholder farm. It implies that where necessary interventions are not made; poor crop development especially at a later stage can affect seed formation and maturity which will eventually lead to poor yield.

### 3.2 Geostatistical Analysis of Soil Chemical Properties

Various models were used for semivariogram analysis to estimate the hypothetical semivariogram parameter in ArcGIS 10.3. The sill value is representing the upper limit of the fitted semivariogram model [45]. Results of the geostatistical analysis indicated that the Mean Error (ME) values close to 0 and Root Mean Square Standardized Error (RMSSE) values close to 1 pointed to unbiased prediction. The nugget value denotes the random variation usually derived from the accuracy of measurement or variations of the properties that cannot be detected in the sample range [46]. The small nugget effect showed spatial continuity between the neighboring points [47], corroborating the findings of Vieira and Gonzalez [48] and Jafarian and Kavian [49] which indicated

nitrogen had a very small nugget effect. Soil chemical properties with a lower nugget effect were generally defined by the spherical semivariogram model (Table 2).

Strong spatial dependence occurred for the cations (Ca and Mg), OC, pH, and P, exchangeable base (K), OC, and N (Table 2). This strong spatial dependence is due to intrinsic soil properties such as soil parent material, topography, texture, and mineralogy on the farm [50]. It shows that anthropogenic or human interventions through fertilization were not sufficient in influencing soil chemical properties. This may also be caused by uniform fertilization without considering the spatial variation of soil chemical properties on the farm. This is as indicated in the results of the earlier descriptive or classical statistics in this study. The nugget-to-sill ratio implies the spatial dependence of soil chemical properties, which all had a strong dependency.

The range of the semivariogram denotes the average distance through which the variable semivariance reaches its highest value. A small effective range indicates a distribution pattern composed of small patches [51]. The small ranges of soil chemical properties on the plot are due to external factors [52], occasioned by the activities of the smallholder farmer. This is possible for the fact the smallholder farmer applied fertilization uniformly across the farm with observed poor crop performance in identified areas on the farm. The distribution of soil chemical properties varies within short ranges and this model can calculate the unsampled points within a neighboring distance of about 12.22 m for pH, OM, N, P, Ca, Mg, K, and 13.33 m for  $H^+ + Al^{3+}$  (Table 2). These short distances are realistic as the sampled points were acquired on the same smallholder farm with high precision for intervention through fertilization.

**Table 1. Descriptive statistics of soil chemical properties**

Nut/Unit	Min	Max	Mean	Median	CV (%)	CV Class	Std.
pH (value)	5.63	6.5	6.03	5.92	4.59	Low	0.277
OM (%)	0.89	1.74	1.40	1.41	19.57	Medium	0.274
N (%)	0.045	0.096	0.072	0.07	23.61	Medium	0.017
P (ppm)	1	10	5.58	5	50.54	Medium	2.80
Ca (ppm)	380	392	386	386	1.19	Low	4.62
Mg (ppm)	76	97	87.48	88	19.68	Medium	6.75
K (ppm)	2	8	4.90	5	37.35	Medium	1.83
( $H^+ + Al^{3+}$ ) cmol/kg	1.54	1.65	1.58	1.57	2.15	Low	0.034

CV=Coefficient of Variation, Std=Standard Deviation. OM=Organic Matter, N=Nitrogen, P=Phosphorus, Ca=Calcium, Mg=Magnesium, K=Potassium,  $H^+ + Al^{3+}$ =Exchangeable Acidity

**Table 2. Geostatistics of soil chemical properties**

Variable	Model	Nugget (Co)	Partial Sill(C)	Sill (Co+C)	Nugget/ Sill (%)	Spatial Class	Rang e (m)	RMSSE	ME
pH (value)	R.Quadratic	0.013	0.079	0.0928	0.14	Strong	12.22	0.9782	0.0029
OM (%)	Exponential	0	0.094	0.0941	0	Strong	12.22	0.9520	0.0035
N (%)	Stable	0	1.167	1.1677	0	Strong	12.22	0.9723	0
P (ppm)	Stable	0	0.581	0.5819	0	Strong	12.22	0.6482	0.3883
Ca (ppm)	Stable	0.0001	3.183	3.1839	0	Strong	12.22	0.9791	0.1898
Mg (ppm)	Exponential	0.0028	0.003	0.0057	0.97	Strong	12.22	0.978	0.0366
K (ppm)	Stable	0	4.004	4.0041	0	Strong	12.22	0.9673	0.0192
H <sup>+</sup> + Al <sup>3+</sup> (cmol/kg)	Stable	0	0.001	0.0010	0	Strong	13.33	1.0437	0.0008

RMSSE= Root Mean Square Standardized Error, ME=Mean Error, pH=Potential Hydrogen, OM=Organic Matter, N=Nitrogen, P=Phosphorus, Ca=Calcium, Mg=Magnesium, K=Potassium, H<sup>+</sup>+AL<sup>3+</sup>=Exchangeable Acidity

### 3.3 Semivariograms of Mapped Soil Chemical Properties

The spread of soil chemical properties on the farm is indicated by continuous surfaces produced from geostatistics through their respective semivariograms relationship. They indicate the spread of variables considered on the smallholder plot (Fig. 2), the generated spatial parameters of geostatistics obtained directly from the semivariogram and the derived variables (Table 2). The nugget, partial sill, sill, and spatial dependencies are all products of the semivariogram. From Fig. 2, it is clear that the nugget for OM, N, P, K, and H<sup>+</sup> + AL<sup>3+</sup> as 0 indicates precision in measurement and soil homogeneity for the listed soil chemical properties.

### 3.4 Spatial Interpolation and Mapping of Soil Chemical Properties

The maps of soil chemical properties as presented in Figs. 3–10 indicates the spatial distribution of soil chemical properties created using the most suitable krigging models. The maps show soil chemical properties considered varied on the smallholder plot. The soil had a pH that is slightly acidic in the center of the farm and more acidic in the western and eastern parts of the farm (Fig. 3). Large areas were covered with 5.98-6.14 values of pH.

The spread of OM on the farm is higher in the central part of the farm with values ranging from 1.55-1.74%. It matched the farmer's identified poor areas in the eastern and western portions of the farm which was poor in organic matter, making crop yield to be poorer (Fig. 4). The western and eastern parts with low OM are coincidentally the dump sites of the tin mining deposits which are poor in vital nutrients needed

for maize and Irish potato. The extensive part of the farm is covered by 1.40-1.54% of OM.

The distribution of N showed a similar pattern to that of the OM content due to the strong correlation between OM and N. The higher values of N (0.08-0.10) in the central patch in the southwestern part of the farm represent areas with identified high crop yields (Fig. 5). Vast areas were covered with 0.07-0.08% of N.

The spread of P on the farm matches that of OM and N where the concentrations are higher in the middle of the farm (8.27-10.00 ppm). However, for P, very high amounts (8.27-10.00) were also found in the southwestern part of the farm (Fig. 6). Likewise, the areas with low spread of P coincide with smallholder farmer's areas of low crop yield. This is because P deficiency reduces vegetative growth and grain yield.

The spread of Ca on the smallholder farm indicated a higher concentration at the center and edge of the farm towards the western part. Major Ca spread is within the 383.45-387.54 ppm range. The lowest values of Ca were noted in the eastern portion of the farm (Fig. 7). The most unproductive smallholder farmer's identified portion matches areas with the lowest Ca values.

The distribution of Mg on the smallholder farm indicates higher concentration in the middle of the farm with values ranging from 87.06-97.00 ppm. Lower values from 76.00-87.06 ppm occurred in the eastern and western portions of the farm. These lower values tallies with the smallholder farmer's identified low potential areas of the farm (Fig. 8), because when Mg is deficient, it leads to a shortage of chlorophyll and that leads to poor and stunted plant growth. Ultimately, the result is low yield as reported by the smallholder farmer.

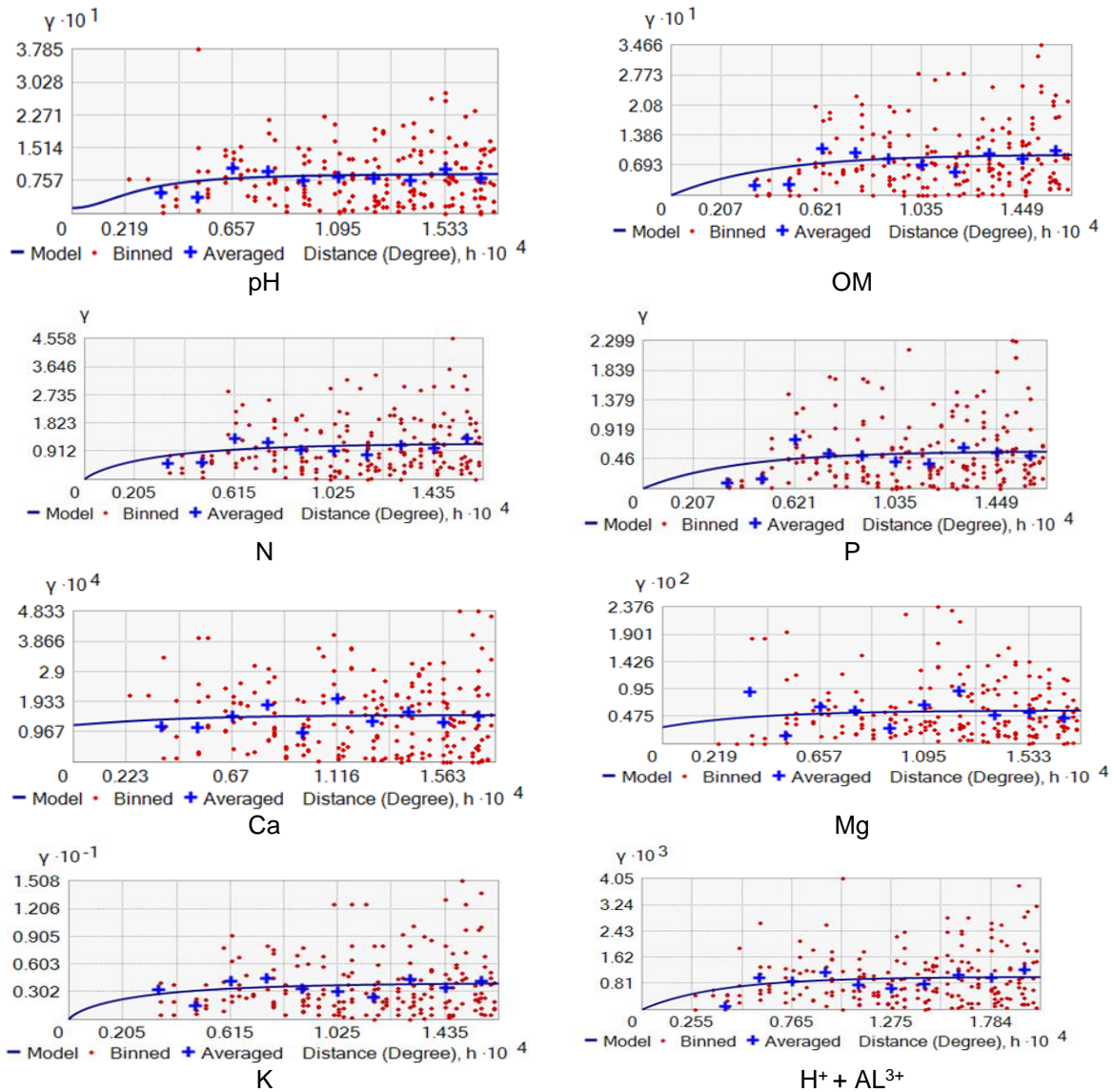


Fig. 2. Fitted Semivariograms Illustrating the Strength of Statistical Correlation between Major Soil Chemical Properties

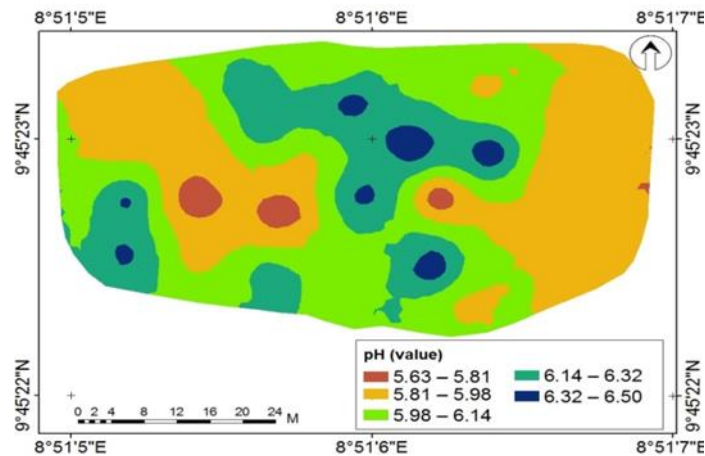


Fig. 3. Spatial distribution of soil pH in the study area

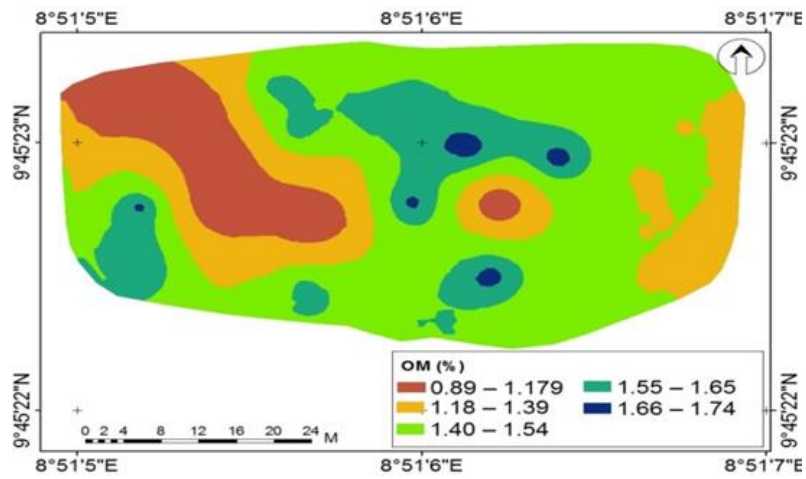


Fig. 4. Spatial distribution of OM content in the study area

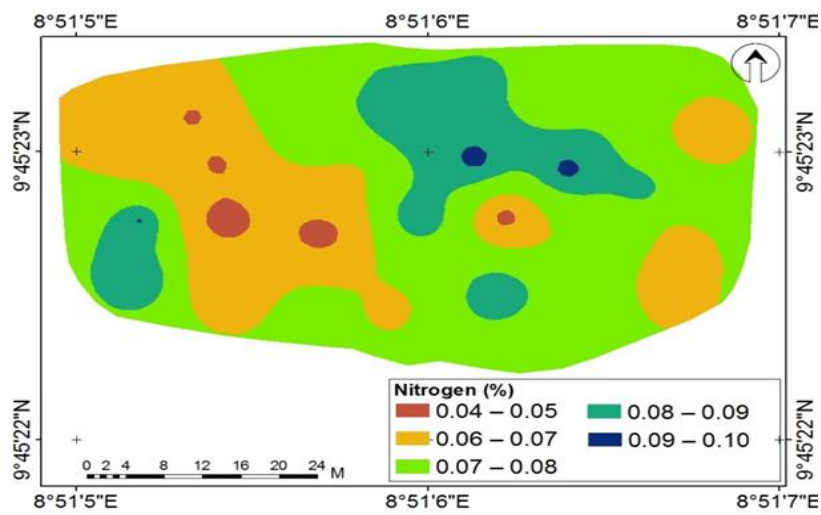


Fig. 5. Spatial distribution of N contents in the study area

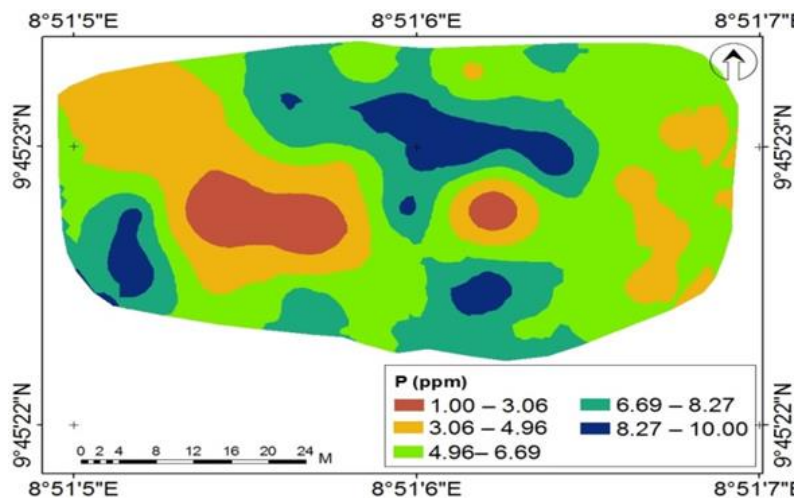
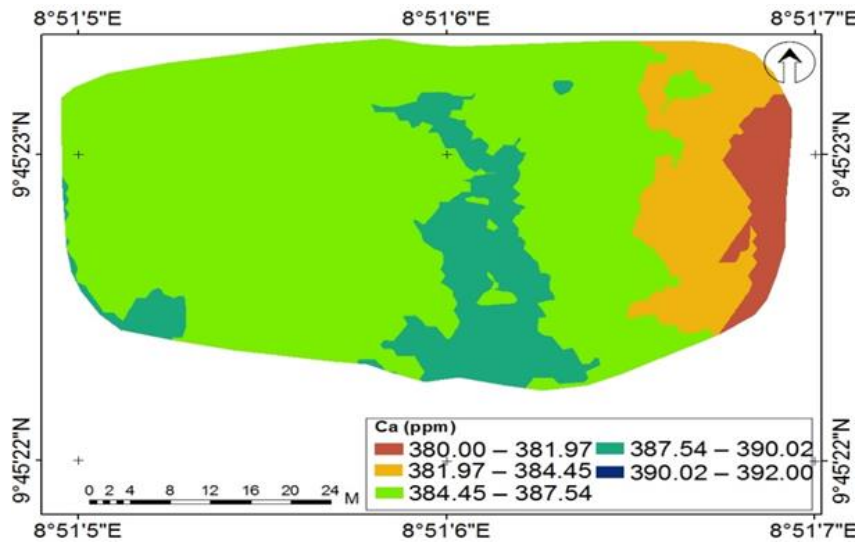
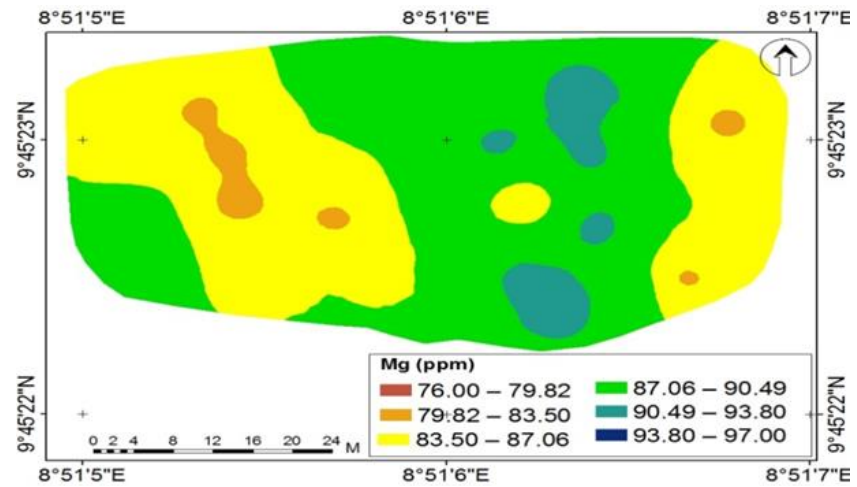


Fig. 6. Spatial distribution of P in the study area

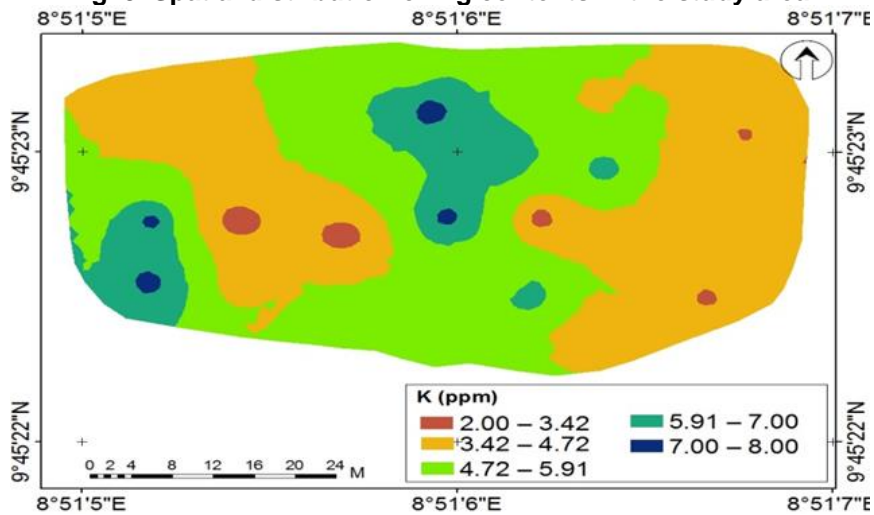




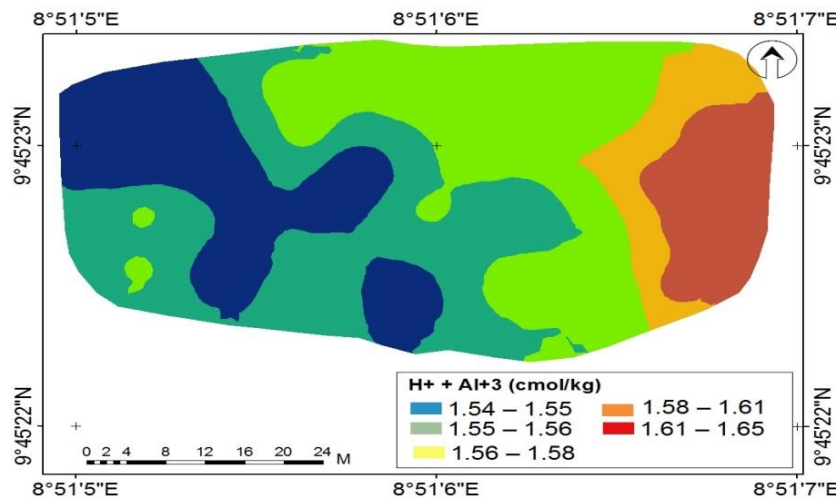
**Fig. 7. Spatial distribution of Ca contents in the study area**



**Fig. 8. Spatial distribution of Mg contents in the study area**



**Fig. 9. Spatial distribution of soil K contents in the study area**



**Fig. 10. Spatial distribution of exchangeable acidity in the study area**

The spatial spread of K on the smallholder farm showed that high values of K ranging from 5.91-8.00 ppm were concentrated in the middle of the farm and the southwestern edge of the farm (Fig. 9). However, higher concentrations of high values in the range of 4.72-5.91 values dominated the whole farm. The lower values were majorly spread in the eastern part with 3.42-3.72 ppm values occupying the largest portion of the farm. The areas of low K are reported to have low yields. This is not unconnected to the fact that K deficiency causes stunted growth of plants and as well reduces crop yield.

The distribution of  $H^+ + Al^{3+}$  on the smallholder farm was highly concentrated (1.54-1.55 nmol/100g) in the western part of the farm. Very low concentrations (1.58-1.65 nmol/100g) were found in the eastern part of the farm. Contrary to the pattern of low spread of nutrients in the western part of the farm, very high values of  $H^+ + Al^{3+}$  were found in the eastern part of the farm (Fig. 10).

#### 4. DISCUSSION

Descriptive results indicated that the medium variability of soil chemical properties in this study corroborates the medium variability by Dakagan [53] and Shehu et al [54]. The pH range of 5.63 to 6.5 falls within the slightly acidic range and is within the ideal range (5.5 – 7) acceptable by most cultivated crops [42, 55]. Soil pH is quite important in agriculture because it regulates nutrient availability to plants by controlling their chemical forms as well as influencing chemical reactions. The productivity of soil and crops are

connected to pH value. So, while the optimal value is required for plants to do well, excessive pH levels inhibit plant root growth and development. In the long run, this poor growth and development limits crop yield [56]. It also concurs with the findings of Dakagan [53] where the same soil chemical properties mostly exhibited medium variability. However, this finding contradicts the very acidic report of Ishak et al. [8].

The exchangeable acidity on the farm modified soil pH by the addition of soluble or insoluble acid or base-inducing chemical elements and ions such as P, K, Ca, Lime, and OM which influenced soil productivity and plant growth [57]. The exchangeable acidity values on the farm are supposed to be inversely related to pH to increase crop productivity and yield. The remedy is to increase soil pH through carbonates of calcium and magnesium, liming via farm yard manure, and ash from different sources [58]. The high values of exchangeable acidity have impeded soil and crop productivity. Organic Matter of 0.89-1.74% on the smallholder farm is very low according to Landon [43], where OC >20% is very high; 10 – 20% is high; 4 - 10% is medium; 2 - 4% is low; and <2% is very low. Continuous cultivation and the effect of trailing and dumpsites are the reasons for poor OM.

The N of 0.045-0.096% is very low [44]. This is due to uniform fertilizer intervention without spatial understanding, low N fertilizer application, and continuous extraction of N fertilizer by cultivated crops. This agrees with the findings of Aliyu et al [59]. More than half the study region is covered by K of 2-5.91 ppm, though the

maximum K value is 8 ppm, both fall under the critical limit for agricultural production [60]. Topography and intensive cropping systems with low application rates of K fertilizer are reasons for potassium depletion on the farm [61]. The P values on the farm ranging from 1-10 ppm contradict very high values of 173.11 to 204.23 ppm reported by Khan et al [62]. Fertilization with poor P nutrients and overturn of soil due to mining, erosion, and leaching are the cause of the very poor content of P on the farm.

The generally low nutrients on the farm concurs with the findings of Ishak et al [8]. where low OC, N, P, K, Ca, and Mg were reported. It also concurs with the findings of Shamsuddin et al. [21] where the bases, OM, P, and N contents were very low. The low nutrients in this mining area also concur with the findings of Agus et al. [22] where N, P, K, Ca, and Mg were very low. The low nutrient content in this study also agrees with the findings of Ideriah and Abere [26] where deficiencies were reported for N, P, and exchangeable bases. The low values of other soil chemical properties demand effective site-specific management by smallholder farmers in tin mining environments, for fruitful crop production.

The findings from the spatial variability where strong spatial dependence occurred for N, Ca, Mg, K, OC, pH,  $H^+ + AL^{3+}$ , and P are due to intrinsic soil properties such as soil parent material, topography, texture, and mineralogy [50]. These findings agree with those of Aliyu et al [59]. and Dakagan [53] where the nutrients indicated similar strong spatial dependence. However, the strong spatial dependence of Ca contradicts their findings. The low range is due to external factors and interventions at short distances by the smallholder farmer [52].

For the distribution of nutrient content on digital maps, where the pH values of 5.81-6.14 covered much of the farm, contradicts that of Khan et al [62]. where the study area was widely covered by alkaline pH values of 7.35-7.82. This also contradicts lower pH values reported by Dakagan [63], necessitating the need for site specific analysis of the distribution or spread and nutrient intervention. The wide spatial spread of OM of 1.4-1.54% in this study contradicts that of Khan et al [62]. where the study area is highly covered with lower OM values of <0.26-0.79. The OM values here are lower than those obtained on greater portion of smallholder farm within 1.17%-3.00% by Dakagan [63], in similar environment. This again reveals micro variability and the need

for precise nutrient management for optimal productivity. The result of N in this study where the study area is dominated by lower values of N (0.07-0.080%) contradicts the submission by Khan et al [62]. where their study area was covered by higher N values of 0.35-0.42%. Likewise, values of N in this study are lower compared to the 0.05-0.22% obtained by Dakagan [63] in an abandoned tin mining site. More contrasting is the spread of P in this study. While very high values of P (79.73-173), almost covered the whole studied area by Khan et al. [62], in this study, half of the study area is covered by very low values (4.06-6.69 ppm) of P. Another major contrasting finding is that of K distribution. While this study has K within the range of 3.42-5.91 ppm covering more than half of the study area, Khan et al [62]. mapped high values of 39.29-94.78 ppm covering over 80% of their study area.

It is therefore important for farmers in this area to incorporate integrated nutrient management (organic and inorganic fertilizers) for higher productivity where the soil fertility is depleted due to continuous cultivation and mining activities. This opinion is strongly supported as applied by Ranganadha et al [64]. It proved useful as higher amount of organic matter combined with NPK fertilizer were more effective in the yield realized.

## 5. CONCLUSION

In areas where management efforts have not yielded the required results on smallholder farms, understanding the distribution of nutrient contents of such areas becomes necessary for optimal crop production. Resources are erroneously wasted in tin mining environments in attempts to restore agricultural lands taken over by mining. There are resurgences of surface mining in mining environments that have added more pain to smallholder farmers who have already suffered the consequential effects of mechanized tin mining. With the understanding of soil spatial variability, areas of low potentials can be precisely managed through appropriate management strategies. Appropriate organic interventions like precise application of both NPK fertilizer and OM are highly recommended. The removal of crop residue as a sustained system by women for cooking in the area denies the farm OM from crop residue. The outcome of this study indicates the efficacy of GIS geostatistics in interpolating continuous surfaces of unsampled data. Conducting site specific distribution of soil chemical properties on smallholder farms in tin-mining environments will

assist smallholder farmers precisely restore fertility on derelict mining sites of individual farms for optimal agricultural productivity.

## COMPETING INTERESTS

Authors have declared that no competing interests exist.

## REFERENCES

1. Stoorvogel JJ, Smaling EMA, Janssen BH. Calculating soil nutrient balances in Africa at different scales - I Supra-national scale. *Nutrient Cycling in Agroecosystems*. 1993;35(3):227-235.
2. Bekunda M, Sanginga N, Woomer PL. Chapter Four - Restoring soil fertility in Sub-Saharan Africa. *Advances In Agronomy*. 2010;108:183-236.
3. Vanlauwe B, Kihara J, Chivenge P, Pypers P, Coe R, Six, J. Agronomic use efficiency of N fertilizer in maize-based systems in sub-Saharan Africa within the context of integrated soil fertility management. *Plant Soil*. 339:35–50.
4. Sheldrick W, Keith SJ, Lingard J. Contribution of livestock excreta to nutrient balances. *Nutrient Cycling in Agroecosystems*. 2003;66:119–131.
5. Vanlauwe V, AbdelGadir AH, Adewopo J, Adjei-Nsiah S, AmpaduBoakye T, Asare R, Baijukya F, Baars E, Bekunda M, Coyne D, Dianda M, DontsopNguezet PM, Ebanyat P, Hauser S, Huising J, Jalloh A, Jassogne L, Kamai N, Kamara A, Kanampiu F, Kehbila A, Kintche K, Kreye C, Larbi A, Masso C, Matungulu P, Mohammed I, Nabahungu L, Nielsen F, Nziguheba G, Pypers P, Roobroeck D, Schut M, Taulya G, Thuita M, Uzokwe VNE, van Asten P, Wairegi L, Yemefack M, Mutsaers HJW. Looking back and moving forward: 50 years of soil and soil fertility management research in sub-Saharan Africa, *International Journal of Agricultural Sustainability*. 2017;15(6):613-631.
6. Sanchez P, Leakey, R. Land use transformation in Africa: Three determinants for balancing food security with natural resource utilization. *European Journal of Agronomy*. 1997;7:15–23.
7. Tully K, Sullivan C, Weil R, Sanchez P. The state of soil degradation in Sub-Saharan Africa: Baselines, trajectories, and solutions. *Sustainability*. 2015;7(6):6523-6552.
8. Ishak Y, Etik PH, Rakhmiati Y. (2017). Restoration of soil physical and chemical properties of abandoned tin- mining in Bangka Belitung Islands. *Journal of Tropical Soils*. 2017;22(1):21-28.
9. Heng T, Heuvelink GBM, Kempen B, Leenaars JGB, Walsh MG, Shepherd KD, Sila A, MacMillan RA, Mendes de Jesus J, Tamene L, Tondoh JE. Mapping Soil Properties of Africa at 250 m Resolution: Random Forests Significantly Improve Current Predictions. *Plos One*, 10(6):0125814. Available:https://doi.org/10.1371/journal.pone.0125814
10. Tabi FO. Soil Fertility Capability Classification (FCC) for rice production in Cameroon lowlands *African Journal of Agricultural Research*. 2013;8(17):1650-1660.
11. Bocchi S, Castrignano A, Fornaro F, Maggiore T. Application of factorial krigging for mapping soil variation at field scale. *European Journal Of Agronomy*. 2000;13:295-308.
12. Iqbal M, Ali A, Rizwanullah M. Residual effect of tillage and farm manure on some soil physical properties and growth of wheat (*Triticum aestivum L.*). *International Journal of Agriculture and Biology*. 2005;7:54-57.
13. Osgoz E. Long term conventional tillage effect on spatial variability of some soil physical properties. *Journal of Sustainable Agriculture*. 2009;33(2):142-160.
14. Jabro JD, Stevens WB, Evans RG, Iversen WM. Spatial variability and correlation of selected soil properties in the Ap horizon of a crop grassland. *Applied Engineering in Agriculture*. 2010; 26(3):419-428.
15. Kihara J, Bolo P, Kinyua M, Rurinda J, Piikki K. Micronutrient deficiencies in African soils and the human nutritional nexus: opportunities with staple crops. *Environ Geochem Health*. 2020; (42):3015–3033.
16. Dickson AA, Ogboin TP, Tate JO, Ikuli JM. Variability of properties of Koroama and Niger Delta University teaching and research farm soils from the Niger Delta Ecological Zone of Nigeria. *European Journal of Agriculture and Forestry Research*. 2021;9(4):1-16.
17. Effiom O, Ayuk E, Thomas E. Variability in soil properties along an Udalf toposequence in the humid forest zone of

- Nigeria. *Kasetsart Journal - Natural Science*. 2010;44(4):564–573.
18. Fraisse CW, Sudduth KA, Kitchen NR, Fridgen JJ. Use of unsupervised clustering algorithms for delineating within Colfield management zones. ASAE Paper 993043, ASAE, Ontario, Canada; 1999.
  19. Olaniyan JA. Project of overview and socioeconomic impact of tin mining. Land Consultant. State Secretariat Cabinet Office Jos. 1998;9-6;43-49.
  20. Musa HD, Jiya SN. An assessment of mining activities impact on vegetation in Bukuru Jos Plateau State Nigeria Using Normalized Differential Vegetation Index (NDVI). *Journal Sustainable Development*. 2011;4(6):150-159.
  21. Shamshuddin J, Mokhtar N, Paramanathan S. Morphology, mineralogy and chemistry of an ex-mining land in IPoh, Perak. *Penanika*. 1986; 9(1):89–97.
  22. Agus C, Wulandari D, Primananda E, Hendryan A, Harijanja V. the role of soil amendment on tropical post tin mining area in Bangka Island Indonesia for dignified and sustainable environment and life. 2nd IOP Conf. Series: Earth and Environmental Science. 2017; 83(1).
  23. Arefieva OD, Nazarkina AV, Gruschakova NV, Skurikhina YE, Kolycheva VB. Impact of mine waters on chemical composition of soil in the Partizansk Coal Basin, Russia. *International Soil and Water Conservation Research*. 2019;7(1) :57-63.
  24. Rachman LM, Baskoro DPT, Bayu HH. The effect of tin mining on soil damage in Pedindang Sub-Watershed, Central Bangka Regency. IOP Conf. Ser.: Earth and Environmental Science. 2019;399 012026.
  - Essandoh PK, Takase M, Bryant MB. (2021). Impact of small-scale mining activities on physicochemical properties of soils in Dunkwa East Municipality of Ghana. *The Scientific World Journal*. 2021; (1):1-13
  26. Ideriah TJK, Abere SA. Physicochemical properties and selected heavy metals in tin-mine spoil soils around Jos Plateau Nigeria. *International Journal of Environmental & Agriculture Research (IJOEAR)*. 2017; 3(8):58-66.
  27. Adegboye MA. Effect of mining on farming in Jos South Local Government area of Plateau State. *Journal of Soil Science and Environmental Management*. 2012;3(4):77-83.
  28. Gwom SL. The berom tribe of Plateau State Nigeria. First edition. Jos. Fab Anieh Nigeria Ltd.1992;15.
  29. Alexander MJ, Kidd AD. Farmers' capability and institutional incapacity in reclaiming disturbed Land on the Jos Plateau, Nigeria. *Journal of Environmental Management*. 2000;59(2):141-155.
  30. Gee WG, Or D. Particle-size analysis. In: Dane J, GC. Topp (eds.). *Methods of soil analysis*. Book Series: 5. Part 4. Soil Science Society of America. USA. 2002;255–293.
  31. Walkley A, Black IA. An examination of the Degtjareff method for determining soil organic matter, and a proposed modification of the chromic acid titration method. *Soil Science*. 1934; 37:29-38.
  32. Bremner JM. Nitrogen-total. In D.L. Sparks et al (ed.) *Methods of soil analysis*. Part 3. SSSA Book Ser. 5. SSSA, Madison, WI; 1996.
  33. Mehlich A. Mehlich 3 Soil test extractant: A modification of the Mehlich 2 extractant. *Commun. Soil Sci. Plant Anal*. 1984;15(12):1409–1416.
  34. Tucker BB, Kurtz LT. Calcium and magnesium determinations by EDTA titrations. *Soil Science Society of American Journal*. 1961;25(1):27-29.
  35. Anderson JM., Ingram JSI. *Tropical soil biology and fertility. A handbook of methods*. CAB international. Walling-ford, UK,. 1993;35. 2nd edition
  36. Dahiya IS, Ritcher J, Mark PS. Soil spatial variability: Review. *International Journal of Tropical Agriculture*. 1984;11(1):1–102.
  37. Cambardella CA, Moorman TB, Novak JM, Parkin TB, Karlen DL, Turco RF, Konopka AE. Field-scale variability of soil properties in central Iowa soils. *Soil Science Society of American Journal*. 1994;58(5):1501–1511.
  38. Ersahin S. Alluvial soil in a field, some physical and chemical properties of the spatial variability of the determination. *SU Journal of the Faculty of Agriculture*. 1999;13:34–41.
  39. Robertson GP. Geostatistics in ecology: Interpolating with known variance. *Ecology*. 1987; 68(3):744–748.
  40. Saleh AM. Spatial variability mapping of some soil properties in Jadwal Al\_Amir Project/Babylon/Iraq. *Journal of the Indian Society of Remote Sensing*. 2018; 46(9):1481–1495.

41. Wang X, Jiake L, Wei C, Xie D. Modeling spatial pattern of precipitation with GIS and multivariate geostatistical methods in Chongqing Tobacco Planting Region, China. *Computer and Computing Technologies in Agriculture IV - 4th IFIP TC 12 Conference, CCTA 2010, Nanchang, China, October 22-25, 2010, Selected Papers, Part III*. Accessed 20th July, 2019.
42. Oluwadare DA, Voncir N, Mustapha S, Mohammed GU. Evaluation and enhancement of available micro-nutrient status of cultivated soil of Nigeria guinea savanna using organic and inorganic ammendments. *Journal Of Agriculture And Veterinary Science*. 2013;3(5):62-68.
43. Landon JR. *Booker tropical soil manual*. Longman scientific and technical Essex, U. K. 1991; pp. 474.
44. Esu IE. Detailed Soil Survey of NIHORT Farm at Bunkure Kano State, Nigeria; Ahmadu Bello University Zaria: Kaduna, Nigeria. 1991.
45. Webster R, Oliver MA. *Geostatistics for environmental scientists*, John Wiley & Sons, Chichester, UK; 2007.
46. Trangmar BB, Yost RS, Uehara G. Application of geostatistics to spatial studies of soil properties. *Advances in Agronomy*. 1986;38:45–94.
47. Chen S, Lina B, Lia Y, Zhou S. Spatial and temporal changes of soil properties and soil fertility evaluation in a large grain-production area of subtropical plain, China. *Geoderma*. 2020;357(3), 113937.
48. Vieira SR, Gonzalez AP. Analysis of the spatial variability of crop yield and soil properties in small agricultural plots. *Bragantia*. 2003;62(1):127–138.
49. Jafarian Z, Kavian A. Effects of land-use change on soil organic carbon and nitrogen, *Communications in Soil Science and Plant Analysis*. 2013;44(1-4):339–346.
50. Costa C, Papatheodorou E.M, Monokrousos, N., Stamou, G. P. Spatial variability of soil organic C, inorganic N and extractable P in a Mediterranean grazed area. *Land Degradation and Development*. 2015; 26(2):103–109.
51. Yunchao Z, Shi-jie W, Hong-mei L et al., Forest soil heterogeneity and soil sampling protocols on limestone outcrops: Example from SW China. *Acta Carsologica*. 2010; 39(10): 115-122.
52. Prochnow L, Resende A, Junior A, Francisco E, Casarin V, Pavinato P. Phosphorus placement for annual crops in the tropics. *Better Crops*. 2018;102(2):21-24.
53. Dakagan JB. Smallholder farmers' constraints to maize growth and yield variability in the Northern Guinea Savannah of Nigeria. *CGIAR SPACE*; 2021. Available:<https://cgspace.cgiar.org>. IITA HANDLE Available:<https://biblio1.iita.org/handle/20.500.12478/7921>.
54. Shehu BM, Merckx R, Jibrin JM, Kamara AY, Rurinda J. Quantifying variability in maize yield response to nutrient applications in the Northern Nigerian Savanna. *Agronomy*. 2018;8(18): 1-23.
55. Soil Survey Staff. *Soil survey laboratory methods manual*. In: Burt R, editor. *Soil survey investigations report No. 42, Version 5.0. 5th ed.* U.S. Department of Agriculture, Natural Resources Conservation Service. 2014;276-279.
56. Awoonor JK, Dogbey BF. An assessment of soil variability along a toposequence in the tropical moist semi-deciduous forest of Ghana. *Open Journal of Soil Science*. 2021; 11(9): 448-477.
57. Benton JJ. *Plant nutrition and fertility manual*. 2nd edition, CRC press, Taylor and Francis Group, Florida, 27. 2012.
58. Ano AO, Agwu JA. Effects of animal manures on selected soil chemical properties, organic matter, pH, exchangeable Ca, and Mg. *Nigeria Journal of Soil Science*. 2005;4(15): 14-19.
59. Aliyu KT, Kamara AY, Jibrin JM, Huising JE, Shehu BM, Adewopo JB, Mohammed IB, Solomon R, Adam A. M, Samndi AM. Delineation of soil fertility management zones for site-specific nutrient management in the maize belt region of Nigeria. *Sustainability*. 2020;12(21): 9010:1-18.
60. Karlen DL, Wollenhaupt NC, Erbach DC. et al. Long-term tillage effects on soil quality. *Soil and Tillage Research*.1994;32(4):313–327.
61. Gao C, Sun B, Zhang TL. Sustainable nutrient management in Chinese agriculture: Challenges and perspective. *Pedosphere*. 2006;16(2):253–263.
62. Khan MZ, Islam MR, Salam ABA, Ray T. Spatial variability and geostatistical analysis of soil properties in the diversified cropping regions of Bangladesh Using Geographic Information System

- Techniques. Applied and Environmental Soil Science. 2021;(7):1-19.
63. Dakagan JB. Soil fertility reclamation of abandoned mining sites through organic intervention. Asian Journal of Soil Science and Plant Nutrition. 2023;9(3): 33-47.
64. Ranganadha RA, Teja KSR, Rinku PV, Deepthi M, Sastry KP. Influence of different doses of vermicompost and NPK on growth of herb *Ocimum tenuiflorum* var. CIM-Ayu. Research J. Pharm. and Tech. 2018;11(5): 1713-1717.

---

© 2024 Dakagan et al.; This is an Open Access article distributed under the terms of the Creative Commons Attribution License (<http://creativecommons.org/licenses/by/4.0>), which permits unrestricted use, distribution, and reproduction in any medium, provided the original work is properly cited.

*Peer-review history:*  
*The peer review history for this paper can be accessed here:*  
<https://www.sdiarticle5.com/review-history/104004>